



Townhouses

€1,195,000

Ref: PW66

245 sqm

Townhouses With 3+1 and 4+1 Bedrooms In Beautiful Golf Club

- Outside
- Central heating
- Closed Condominium
- Fireplace
- Pool
- Storage
- Lift
- Alarm
- Amenities
- Concierge Service
- Gym

Telephone: +351 213 471 603
Email: info@portugalhomes.com

Praça da Alegria 1, 3rd Floor, 1250-004 Lisboa, Portugal Licence AMI - 14414 | APEMIP 5940



Property Description

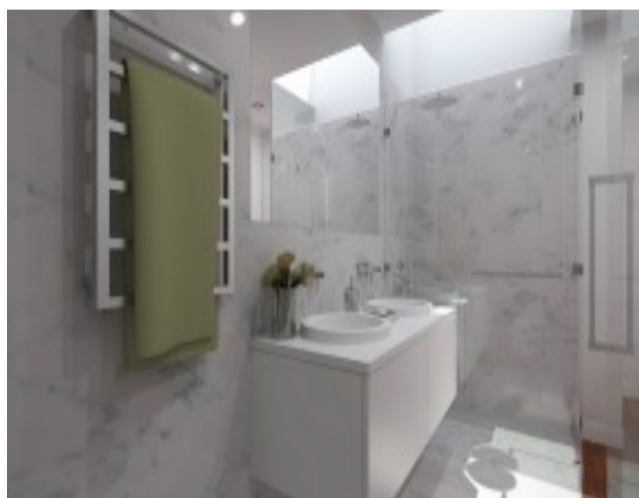
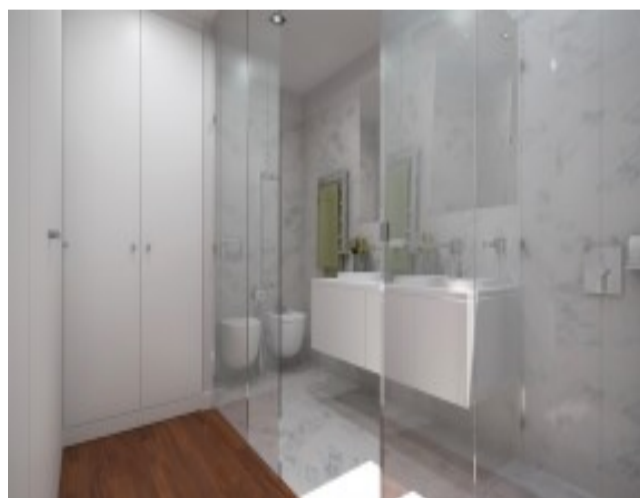
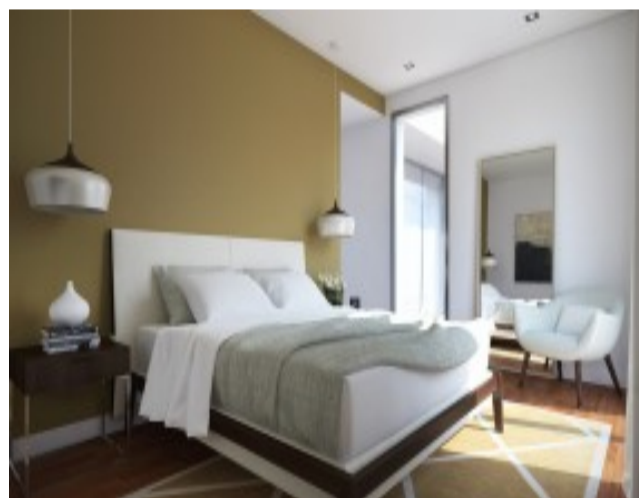
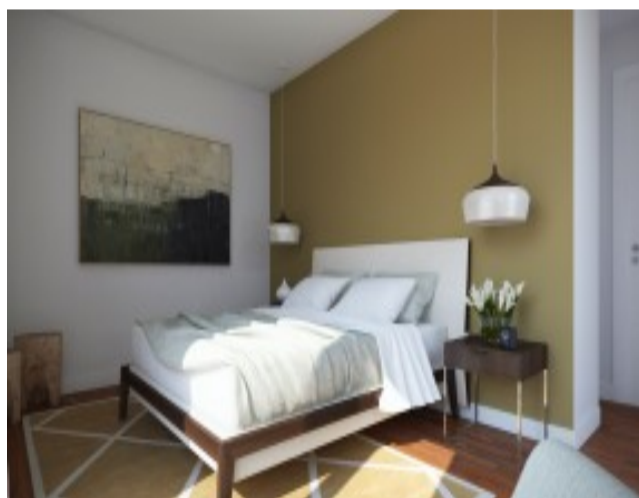
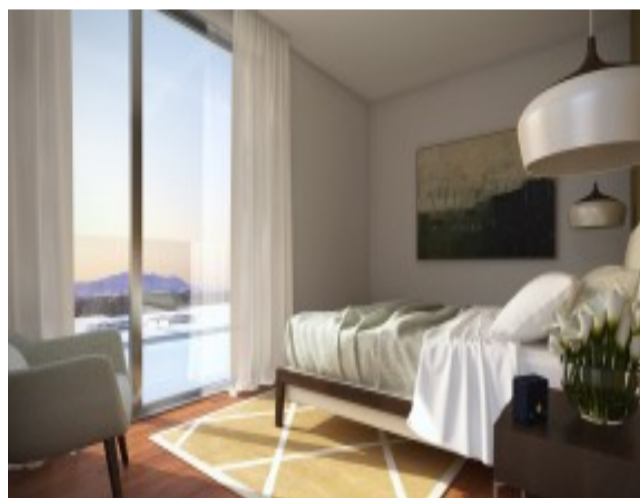
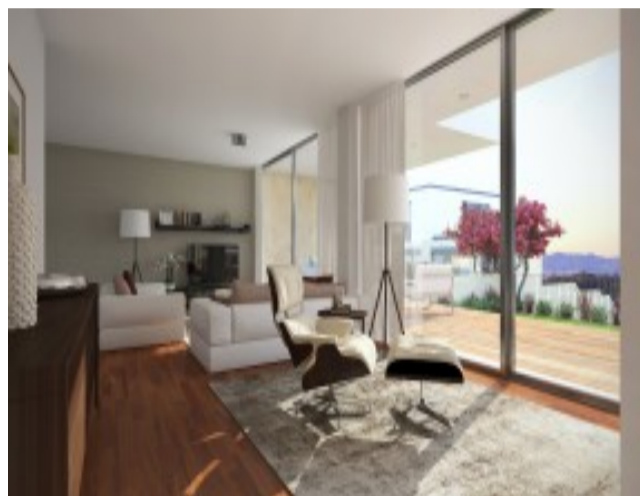
Through an amazing contemporary design these townhouses share an architectonic simplicity that will involve you with the green fields of the area. With great finishes and a beautiful backyard with a pool these townhouses are a great investment for someone who wishes to be part of the nature area while being close to the city centre. These townhouse have three bedrooms, one master suite and two suite bedrooms.

This Club has its private wellness & sports centre, cycleway, security, 4 tennis courts, football field, beach volley, pools,hairstylist, coffee shop, minimarket and also its own Bus service to take you to Colombo Shopping Centre (10 minutes).

The area has a beautiful view to the Serra de Sintra, and it has the peace and quiet of the countryside without being too far away from the city centre. Only 15 minutes away driving you have the Airport and the city centre of Marquês de Pombal.

Check our other available [properties for sale in Belas](#) and [houses in Amadora](#).

Gallery



Telephone: +351 213 471 603
Email: info@portugalhomes.com

Praça da Alegria 1, 3rd Floor, 1250-004 Lisboa, Portugal Licence AMI - 14414 | APEMIP 5940



Additional Details

Attributes

Net Area 245sq m	Gross Area 245sq m	Floors 3
Year Built 2019		

Property Features

Outside	Pool	Amenities
Central heating	Storage	Concierge Service
Closed Condominium	Lift	Gym
Fireplace	Alarm	Street Parking
Outdoor Parking	Covered Parking	

New Development Features

Development Units

Fraction	Bedrooms	Floor Size	Price
314	3	536 sqm	€1,195,000

Site Floorplan

Telephone: +351 213 471 603
Email: info@portugalhomes.com

Praça da Alegria 1, 3rd Floor, 1250-004 Lisboa, Portugal Licence AMI - 14414 | APEMIP 5940

