



**€520,000**

**Ref: PW48**

**109 sqm**

Unique and charming 2 bedroom and 2 bathroom Groundfloor unit, in a fully historical refurb building, with an elevator and a lovely 13 m2 terrace. The apartment comes fully equipped, with high standard finis

Telephone: +351 213 471 603  
Email: [info@portugalhomes.com](mailto:info@portugalhomes.com)

Praça da Alegria 1, 3rd Floor, 1250-004 Lisboa, Portugal Licence AMI - 14414 | APEMIP 5940



## Property Description

Unique and charming 2 bedroom and 2 bathroom Groundfloor unit, in a fully historical refurb building, with an elevator and a lovely 13 m2 terrace.

The apartment comes fully equipped, with high standard finishing and great areas.

In one of the most emblematic areas of Lisbon, next to the main avenue of Lisbon, Avenida da Liberdade and the best-known squares, the Praça da Alegria, bet the creation of a single enterprise, with an architecture of excellence together with the refinement of an odd quarter of our city.

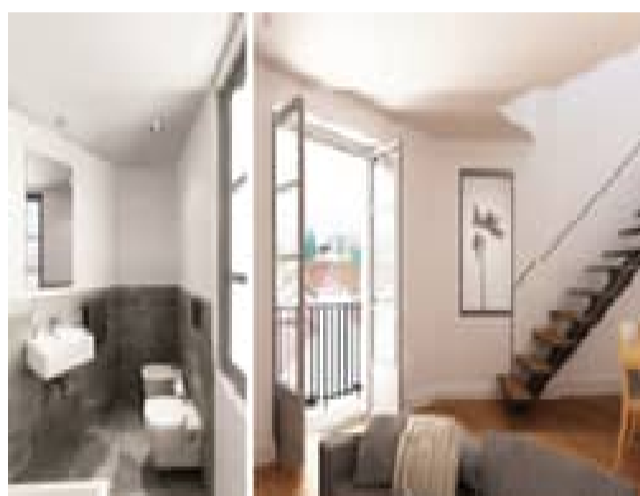
With a superb location, in the street of joy, historic, where the Pombaline architecture predominates, the building the joy is situated between the Rossio, Príncipe Real and Neighborhood High, just a few metres from the botanical gardens and Mayer Park.

This project has as its points of order recovery detail in the long term and the bet in architecture with the signing of a recognized and prestigious Portuguese architect.

In the neighbourhood you will find trade, restaurants, museums, galleries, gardens, some cafes, as well as discover the multiple accesses to all types of transport within minutes.

Find more [properties in Principe Real](#) and [houses around Lisbon](#). You can also [read our guide to Lisbon](#).

## Gallery



Telephone: +351 213 471 603  
Email: [info@portugalhomes.com](mailto:info@portugalhomes.com)

Praça da Alegria 1, 3rd Floor, 1250-004 Lisboa, Portugal Licence AMI - 14414 | APEMIP 5940



## Additional Details

### Attributes

<b>Status</b> Sold	<b>Net Area</b> 109sq m	<b>Gross Area</b> 109sq m
<b>Condition</b> New	<b>Year Built</b> 2018	

## Site Floorplan

