

€360,000

Ref: PW45

52 sqm

New apartment in refurbished building in central Lisbon

Telephone: +351 213 471 603
Email: info@portugalhomes.com

Praça da Alegria 1, 3rd Floor, 1250-004 Lisboa, Portugal Licence AMI - 14414 | APEMIP 5940



Property Description

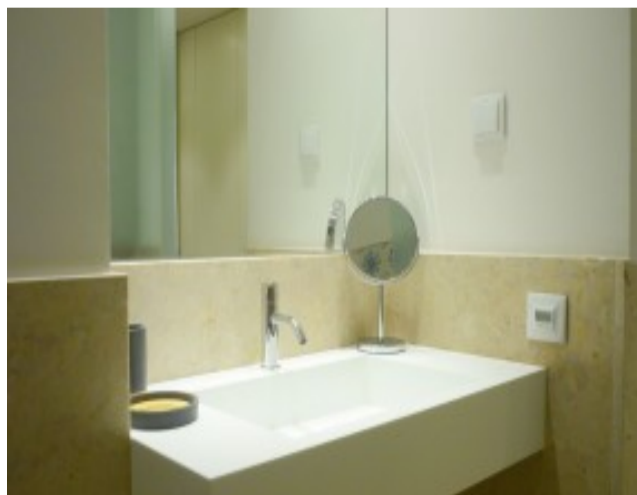
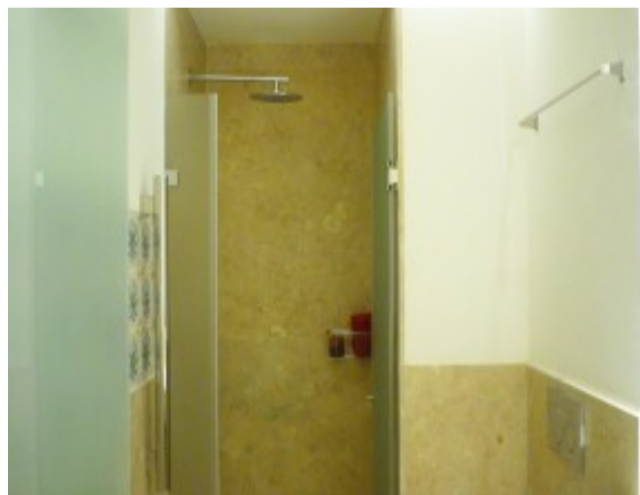
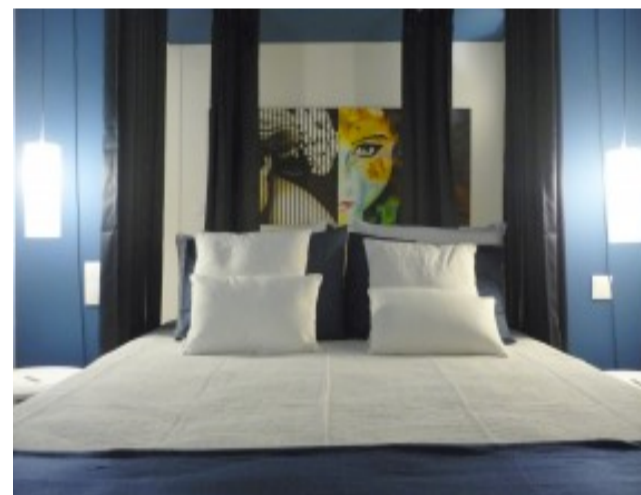
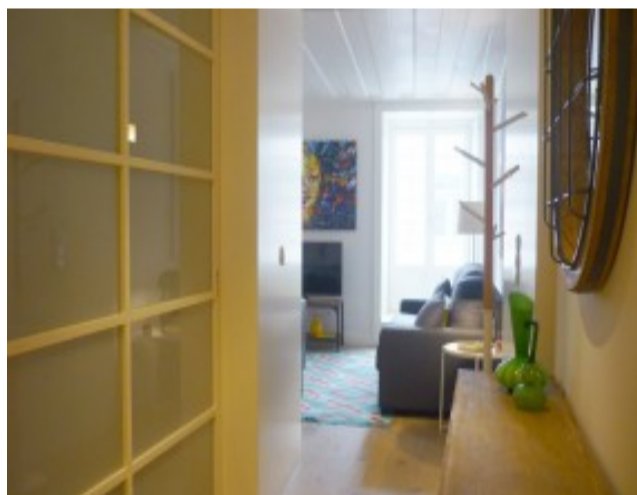
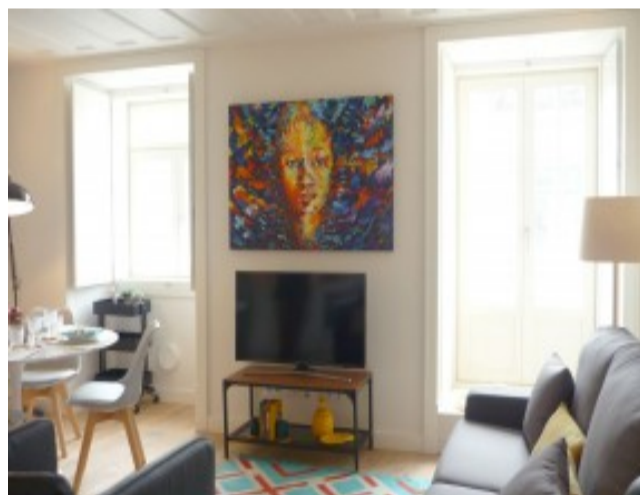
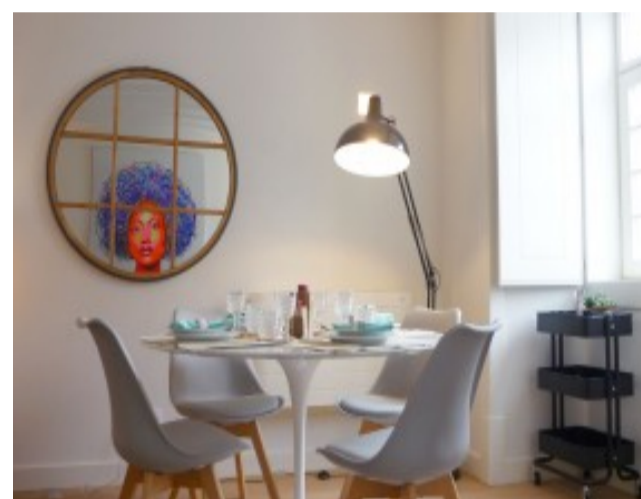
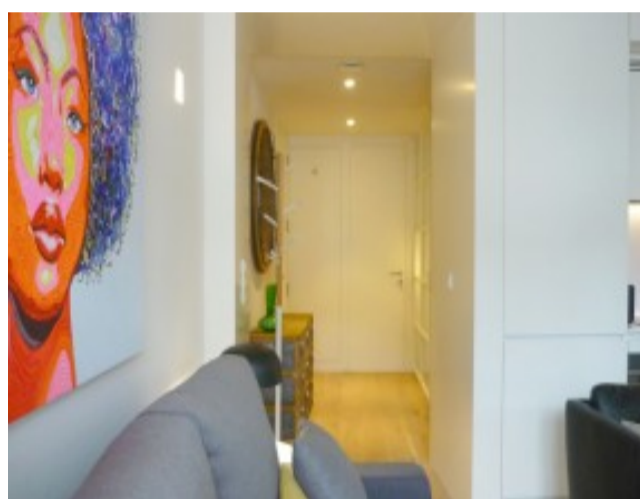
Chiado is one of the most emblematic and distinct districts of Lisbon.

This neighbourhood has a vibrant commercial life and several cultural spaces, such as theatres, art galleries, museums and exceptional monuments. It is a notorious gathering point for many people, filled with elegant coffee shops and trendy restaurants.

This particular apartment features a bright living room with an open kitchen, a bedroom and bathroom. It's beautiful balcony faces the known district of Cais do Sodré.

The apartment also includes furniture.

Read more about the city in our [guide to Lisbon](#) and check other [properties for sale in Lisbon](#) and [houses around Cais do Sodré](#).



Additional Details

Attributes

Status Sold	Net Area 52sq m	Gross Area 52sq m
Floors 1	Year Built 2017	

Site Floorplan

Telephone: +351 213 471 603
Email: info@portugalhomes.com

Praça da Alegria 1, 3rd Floor, 1250-004 Lisboa, Portugal Licence AMI - 14414 | APEMIP 5940

