

€355,000

Ref: PW444

70 sqm

Two-bedroom apartment for a total refurbishment

- Central heating

Telephone: +351 213 471 603
Email: info@portugalhomes.com

Praça da Alegria 1, 3rd Floor, 1250-004 Lisboa, Portugal Licence AMI - 14414 | APEMIP 5940



Property Description

Two-bedroom apartment

Graça is a former parish in the municipality of Lisbon, Portugal. At the administrative reorganization of Lisbon in 2012 it became part of the parish São Vicente.

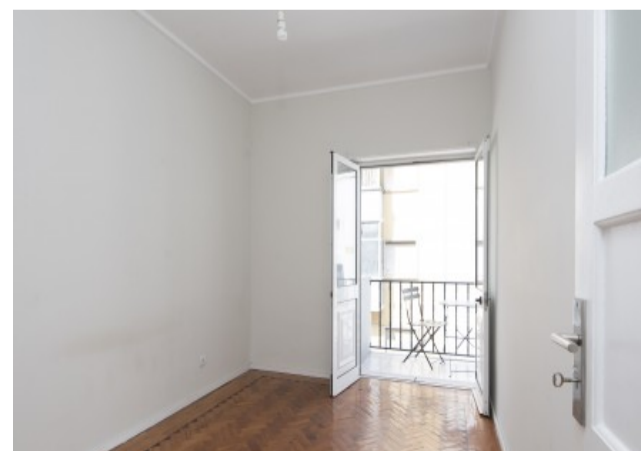
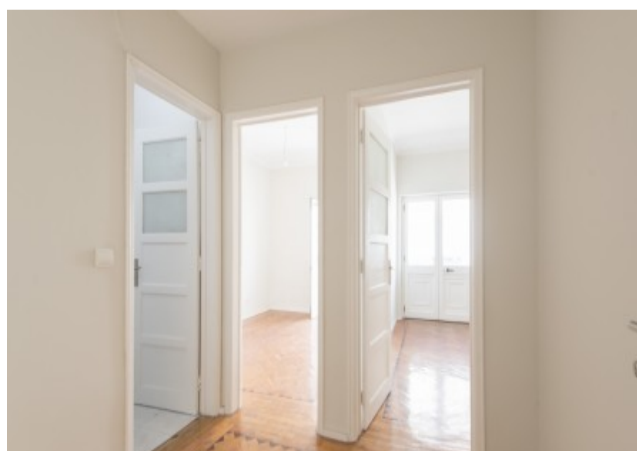
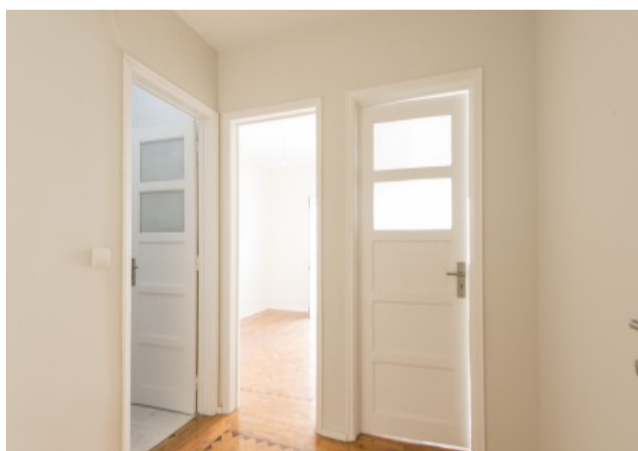
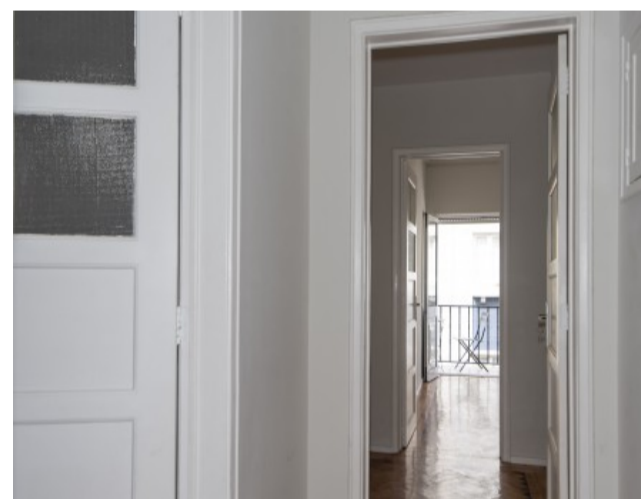
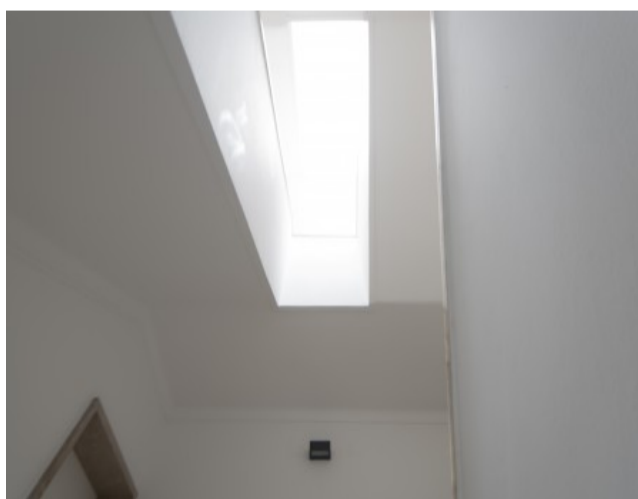
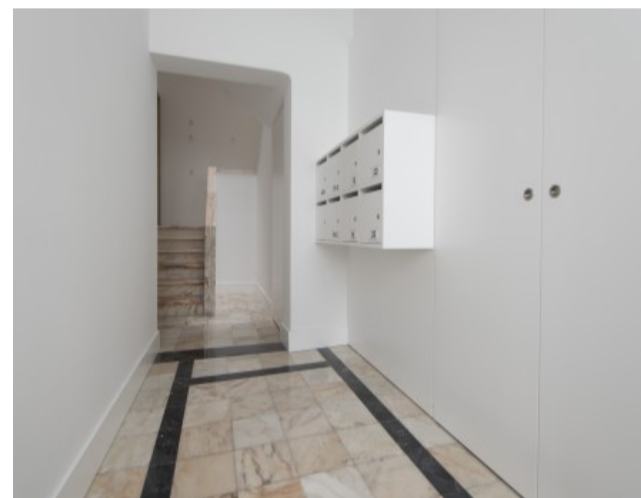
In the highest of the seven hills lies the historical district of Graça. Here you can feel the genuine atmosphere of Lisbon and its people, who live in this neighborhood in perfect harmony with the residents who have recently joined, including many foreigners who were captivated by this prestigious area of Lisbon.

Today, Graça is a very rich and diverse neighborhood, with wide streets, viewpoints, and buildings ranging from the simplest of residences to the most imposing palace. It is an area that appeals not only to locals but also foreigners, for its soul, historical value and location.

Two bedroom apartment for a total refurbishment. Location is very quiet but very central. Public transport at the door.

*****Apartment rented until February 2020.

*****Photos merely illustrative of the possible state of the apartment.



Telephone: +351 213 471 603
Email: info@portugalhomes.com

Praça da Alegria 1, 3rd Floor, 1250-004 Lisboa, Portugal Licence AMI - 14414 | APEMIP 5940



Additional Details

Attributes

Status Pre-Reserved	Net Area 70sq m	Gross Area 70sq m
Floors 1	Condition To be Refurbished	Year Built 1961

Property Features

Central heating

Site Floorplan

Telephone: +351 213 471 603
Email: info@portugalhomes.com

Praça da Alegria 1, 3rd Floor, 1250-004 Lisboa, Portugal Licence AMI - 14414 | APEMIP 5940

