



São Vicente

€0

Ref: PW433

New development of Lisbon's historical city center. New construction, already completed comprising 6 apartments, one per floor. Two Studio apartments and four one-bedroom apartments.

- Outside

Telephone: +351 213 471 603
Email: info@portugalhomes.com

Praça da Alegria 1, 3rd Floor, 1250-004 Lisboa, Portugal Licence AMI - 14414 | APEMIP 5940



Property Description

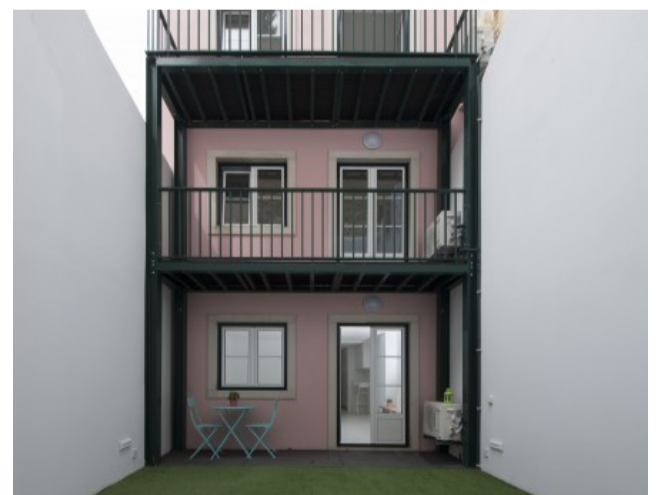
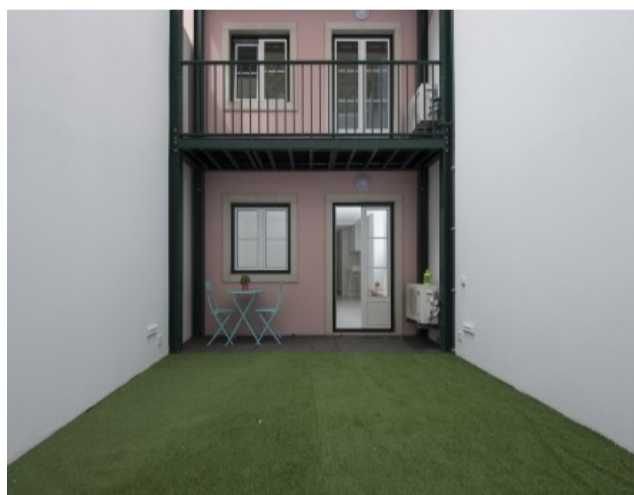
New development of Lisbon's historical city center

On the famous 28 tram line, find this recently completed development comprising 6 apartments, one per floor, from studios to 1 bedroom apartments.

Some units have terraces, gardens or views but all of them are fully equipped and key ready.

The area is known for its monastery, the Flea Market and also for one of the most famous coffee shops and bakeries in town.

Suitable for Short Term use.



Telephone: +351 213 471 603
Email: info@portugalhomes.com

Praça da Alegria 1, 3rd Floor, 1250-004 Lisboa, Portugal Licence AMI - 14414 | APEMIP 5940



Additional Details

Attributes

Floors 6	Condition New	Year Built 2019
--------------------	-------------------------	---------------------------

Property Features

Outside

New Development Features

Development Units

Fraction	Bedrooms	Floor Size	Price
A	0	58 sqm	Reserved
B	0	55 sqm	Reserved
C	1	61 sqm	Reserved
D	1	56 sqm	Reserved
E	1	55 sqm	Reserved
F	1	46 sqm	Reserved

Site Floorplan

Telephone: +351 213 471 603
Email: info@portugalhomes.com

Praça da Alegria 1, 3rd Floor, 1250-004 Lisboa, Portugal Licence AMI - 14414 | APEMIP 5940

