

€545,000

Ref: PW42

60 sqm

Great investment opportunity in Lisbon.

Telephone: +351 213 471 603
Email: info@portugalhomes.com

Praça da Alegria 1, 3rd Floor, 1250-004 Lisboa, Portugal Licence AMI - 14414 | APEMIP 5940



Property Description

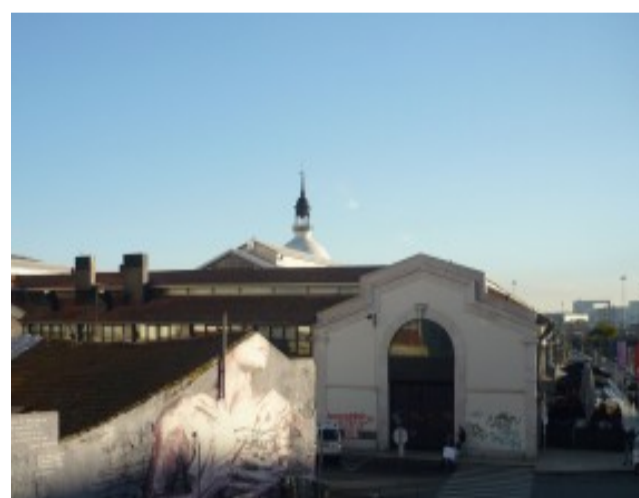
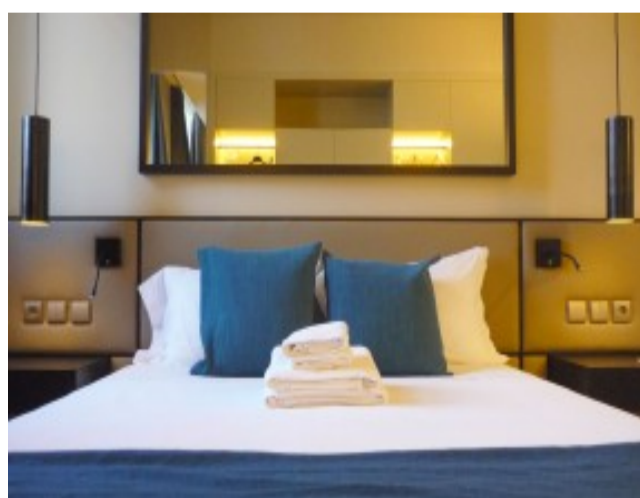
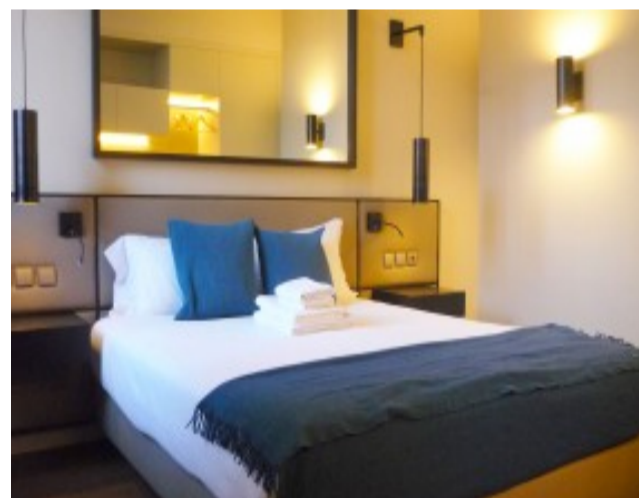
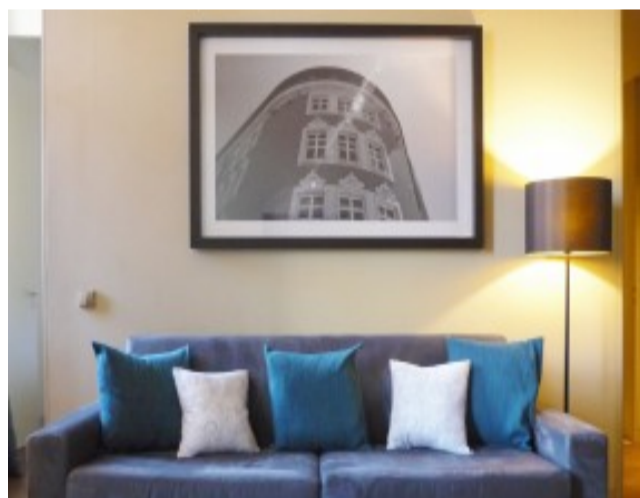
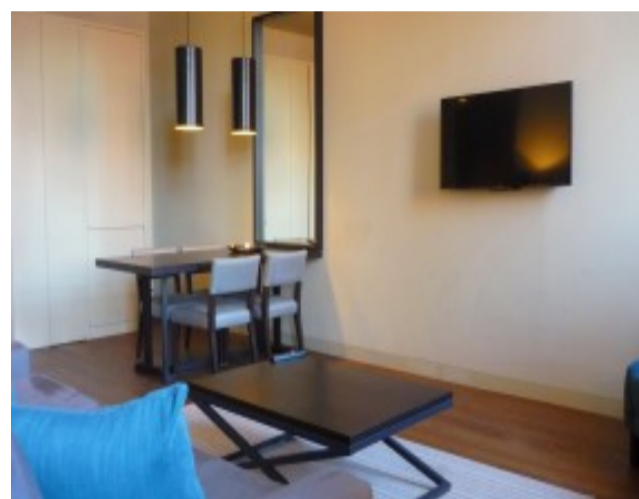
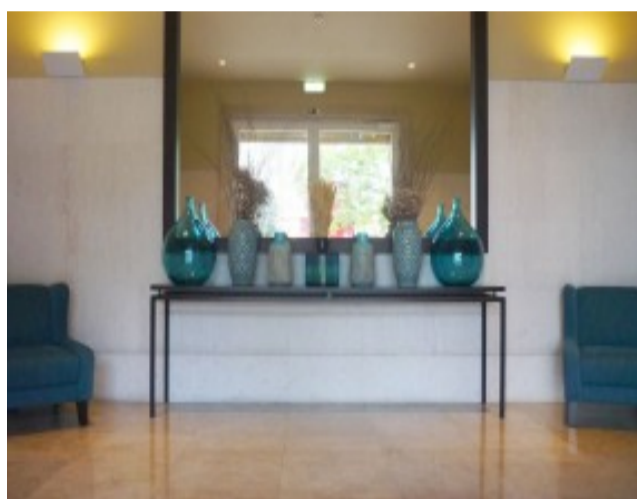
Along the river side you can find the Cais do Sodré district, one of the most emblematic in Lisbon nowadays.

It's filled with the coolest restaurants, bars and old fashioned shops.

Located just a few meters away from the Time Out Market, this refurbished building offers a great investment opportunity.

This particular apartment features one bedroom, one bathroom and an ample living room with an open kitchen. This property is a perfect fit for short term rental due to its high quality and central location.

You can also read more about the city in [guide to Lisbon](#) and browse other available [properties for sale around Cais do Sodré](#) and [houses around Lisbon](#).



Additional Details

Telephone: +351 213 471 603
Email: info@portugalhomes.com

Praça da Alegria 1, 3rd Floor, 1250-004 Lisboa, Portugal Licence AMI - 14414 | APEMIP 5940



Site Floorplan

Telephone: +351 213 471 603
Email: info@portugalhomes.com

Praça da Alegria 1, 3rd Floor, 1250-004 Lisboa, Portugal Licence AMI - 14414 | APEMIP 5940

