



**€820,000**

**Ref: BL1193**

Land in Praia de Santa Cruz with approved project for a condominium of 11 villas with sea views on the horizon. The lan...

Telephone: +351 213 471 603  
Email: [info@portugalhomes.com](mailto:info@portugalhomes.com)

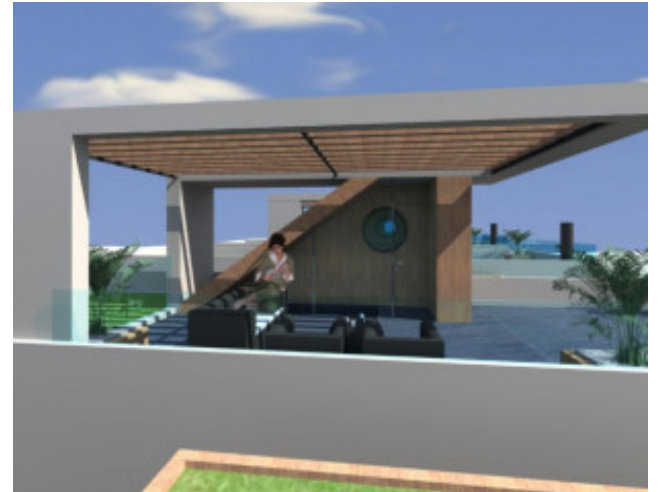
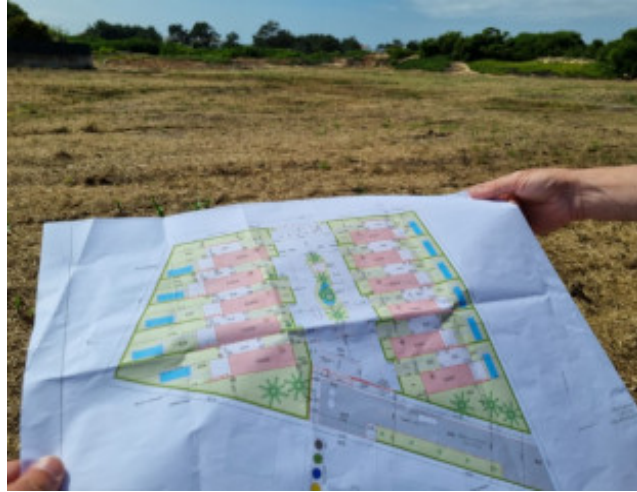
Praça da Alegria 1, 3rd Floor, 1250-004 Lisboa, Portugal Licence AMI - 14414 | APEMIP 5940





## Property Description

Land in Praia de Santa Cruz with approved project for a condominium of 11 villas with sea views on the horizon. The land has tarred access to the entrance and all the infrastructure already installed (sanitation and water network, electricity and telecommunications networks). The land is flat and has a well that can be used to water the common parts of the future condominium. Situated in a residential area, just 5 minutes by car from the beaches and 15 minutes from the center of Torres Vedras. Energy Rating: Exempt #ref:BL1193



Telephone: +351 213 471 603  
Email: [info@portugalhomes.com](mailto:info@portugalhomes.com)

Praça da Alegria 1, 3rd Floor, 1250-004 Lisboa, Portugal Licence AMI - 14414 | APEMIP 5940



## Additional Details

**Telephone:** +351 213 471 603  
**Email:** [info@portugalhomes.com](mailto:info@portugalhomes.com)

Praça da Alegria 1, 3rd Floor, 1250-004 Lisboa, Portugal Licence AMI - 14414 | APEMIP 5940



## Site Floorplan

**Telephone:** +351 213 471 603  
**Email:** [info@portugalhomes.com](mailto:info@portugalhomes.com)

Praça da Alegria 1, 3rd Floor, 1250-004 Lisboa, Portugal Licence AMI - 14414 | APEMIP 5940

