



📷 3 / 36



€990,000

Ref: PW3877

370 sqm

### Vilamoura Three Bedroom semi-detached Villa

- Outside
- Pool
- Central heating
- A/C
- Closed Condominium
- Equipped Kitchen
- Garden
- Suite
- Outdoor Parking
- Garage
- Radiant Floor Heating

Telephone: +351 213 471 603  
Email: [info@portugalhomes.com](mailto:info@portugalhomes.com)

Praça da Alegria 1, 3rd Floor, 1250-004 Lisboa, Portugal Licence AMI - 14414 | APEMIP 5940



# Property Description

## Three Bedroom semi-detached Villa

Three bedroom semi-detached house located in Vilamoura, close to the Victoria golf course, in a residential and very quiet area.

The development where this house is located, privileges green spaces, tranquility and proximity to all necessary amenities and services.

House of traditional architecture where all materials and equipment were selected to obtain maximum quality, thus creating a space of absolute comfort. The condominium is surrounded by green areas and also has swimming pools and leisure areas. The house is equipped with the most sophisticated equipment on the market.

This property has the following features: underfloor heating throughout the house, home automation, programmable blinds and lights with remote control via App, intercom between rooms, solar water panels, air conditioning in all rooms and in the kitchen, household appliances and Bosch technology, garage, large garden, central vacuum, central boiler heating with individual regulation for each room, alarm, high quality insulation and decorative materials (marble and artificial stone) and marble stairs.

## Description

### Hall and living rooms:

- Ceramic and polished Estremoz marble floors;
- Fireplace;
- Under floor heating;
- Air conditioning.

### Bedrooms:

- Ceramic floors;
- Plastered suspended ceilings with indirect light;
- Custom fitted wardrobes.

### Bathrooms:

- Fitted with Brecha marble and/or Bisazza Glass with polished Estremoz marble;
- Bathroom furniture in wood and Silestone;
- Towel warmer and bathroom heater;
- Wall mounted Roca sanitary ware;
- Grohe taps.

### Kitchen:

- Kitchen top Silestone;
- Kitchen equipped with Bosch appliances:
- American-style fridge;
- Multifunction electric oven;
- Microwave;
- Ceramic hobs;
- Dishwasher;
- Extractor fan;
- Boiler.

### Basement and Garage:

- Equipped laundry with basin, washing machine and dryer machine;
- Games room;
- Pre-installation for cinema surround system;
- Mechanical ventilation with air renewal in the basement.

#### **Technology and Comfort:**

- Domotics (security and lighting)
- Central vacuum;
- Electric blinds;
- Automatic garage door;
- Central sound system;
- Pre-installation for Alarm system;

#### **Common Areas**

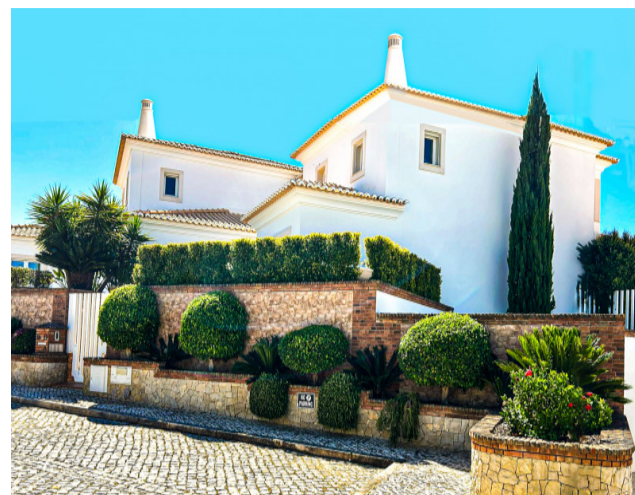
- Swimming pools for adults and children;
- Gardens and recreations areas;
- Fenced common areas;
- Network of garden lighting;

Located 500 meters from the Vilamoura International College, seven kilometers from the Vilamoura Marina and 25 kilometers from Faro Airport.

**This property will sell very quickly, please contact Portugal Homes today for more information on this excellent opportunity.**

You can also check our other [properties for sale around Vilamoura](#) and read more about the region in our [Algarve guide](#) and [explore the town of Vilamoura](#)

## Gallery



Telephone: +351 213 471 603  
Email: [info@portugalhomes.com](mailto:info@portugalhomes.com)

Praça da Alegria 1, 3rd Floor, 1250-004 Lisboa, Portugal Licence AMI - 14414 | APEMIP 5940



## Additional Details

### Attributes

<b>Status</b> Available	<b>Tenure Type</b> Freehold	<b>Net Area</b> 370sq m
<b>Gross Area</b> 370sq m	<b>Floors</b> 3	<b>Condition</b> Used
<b>Year Built</b> 2018		

### Property Features

Outside	Pool	Central heating
A/C	Closed Condominium	Equipped Kitchen
Garden	Suite	Outdoor Parking
Garage	Radiant Floor Heating	

## Site Floorplan

**Telephone:** +351 213 471 603  
**Email:** [info@portugalhomes.com](mailto:info@portugalhomes.com)

Praça da Alegria 1, 3rd Floor, 1250-004 Lisboa, Portugal Licence AMI - 14414 | APEMIP 5940

