

€510,000

Ref: PW379

106 sqm

Excellent 2 bedroom apartment in condominium with pool.

- Outside
- Heating
- Pool
- Central heating
- Amenities

Telephone: +351 213 471 603
Email: info@portugalhomes.com

Praça da Alegria 1, 3rd Floor, 1250-004 Lisboa, Portugal Licence AMI - 14414 | APEMIP 5940



Property Description

Between spacious houses and apartments, and a number of important services such as, good hospitals, road and rail transport, supermarkets and schools...São Domingos de Benfica is an attractive district in Lisbon.

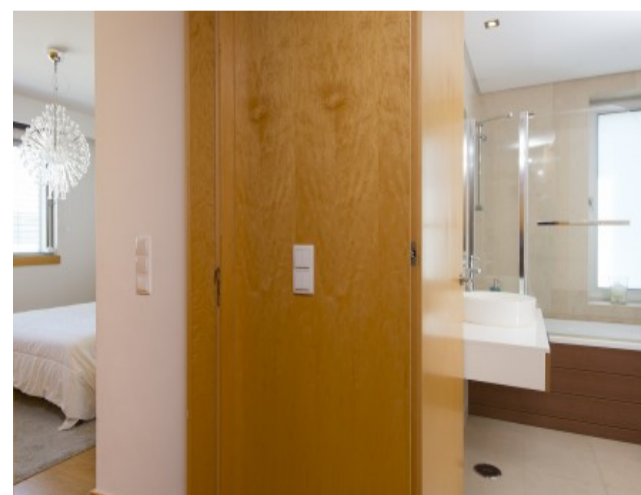
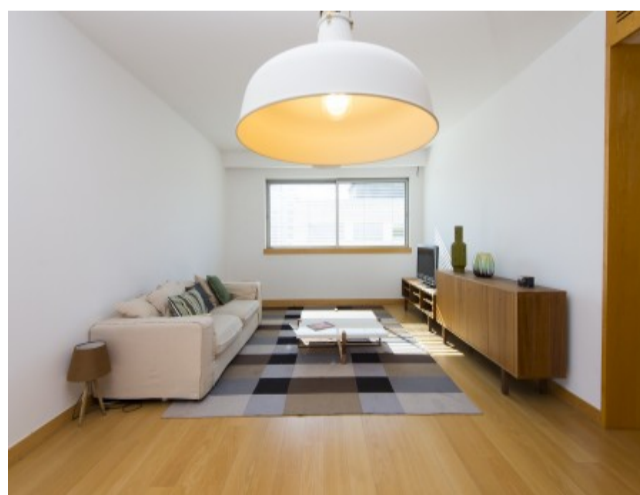
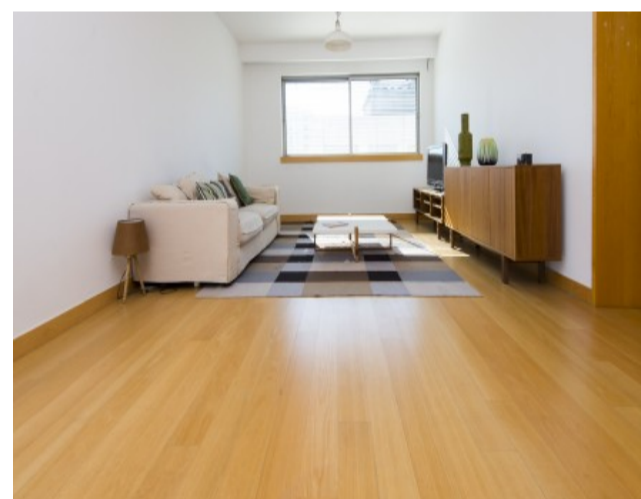
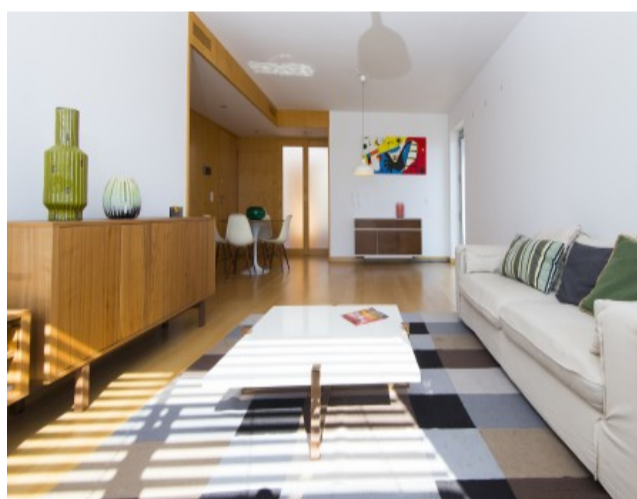
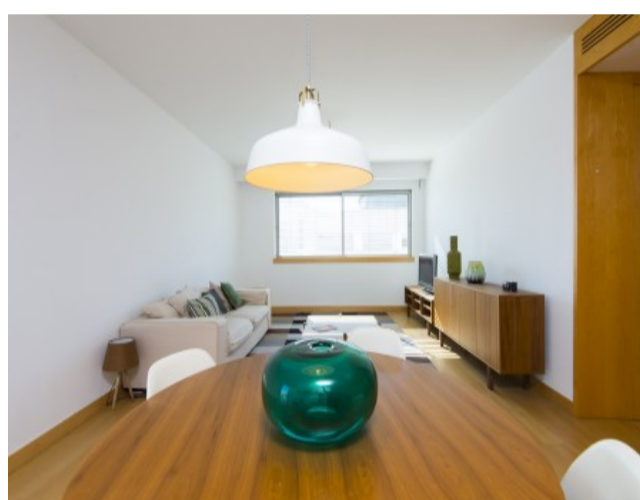
This apartment is located in the neighborhood of Laranjeiras, with subway station at the door and 10 minutes from downtown Lisbon. Its a 2 bedroom apartment, one of them in suite.

With 106 sqm, two full bathroom, fitted wardrobes with wooden doors. Living room with 35 sqm. Fully equipped kitchen with an island in the center.

This apartment is within walking distance of all kind of shops, services and public transports. Its located 500m from Loja do Cidadão and 900m from Ismaili Centre.

Ideal location to live or to rent.

Book your visit now.



Telephone: +351 213 471 603
Email: info@portugalhomes.com

Praça da Alegria 1, 3rd Floor, 1250-004 Lisboa, Portugal Licence AMI - 14414 | APEMIP 5940



Additional Details

Property Features

Outside	Pool	Amenities
Heating	Central heating	

Site Floorplan

Telephone: +351 213 471 603
Email: info@portugalhomes.com

Praça da Alegria 1, 3rd Floor, 1250-004 Lisboa, Portugal Licence AMI - 14414 | APEMIP 5940

