



€1,350,000

Ref: PW3648

247 sqm

House T4 , ground floor , with stunning views of the mountains of Sintra .

- Outside
- A/C
- Closed Condominium
- Suite
- Pool
- Storage
- Garden
- Alarm
- Amenities
- Concierge Service
- Gym

Telephone: +351 213 471 603
Email: info@portugalhomes.com

Praça da Alegria 1, 3rd Floor, 1250-004 Lisboa, Portugal Licence AMI - 14414 | APEMIP 5940



Property Description

Sintra is a town and municipality in the Greater Lisbon region of Portugal, located on the Portuguese Riviera that includes the Sintra-Cascais Nature Park through which the Sintra Mountains run.

It is famous for its architecture, historic estates, villas, gardens, royal palaces and castles which resulted in the classification of the town as a UNESCO World Heritage Site. It's landmarks include the Castle of the Moors, the Pena National Palace and the Sintra National Palace. With its rippling mountains, dewy forests thick with ferns and lichen, exotic gardens and glittering palaces, Sintra is like a page torn from a fairy tale book. It boasts a positively dizzying array of cultural heritage and natural beauty—with palaces, castles, tunnels, lakes, forests, towers, grottoes, and beaches all within mere minutes of each other.

Sintra has a good choice of schools and education facilities, restaurants, retail stores and good healthcare facilities.

Lisbon's commuter railway network provides direct services to Sintra and the journey takes 35–45 minutes all services run direct with no transfers required, and take on average 1h 5m.

Sintra is 25km from Lisbon, about 40 minutes by car.

The Sintra tramway links Sintra with the Atlantic Coast at Praia das Maçãs, providing a beautiful scenic ride along the way and covering a distance of some 11.5 kilometres (7.1 miles).

Sintra is one of the wealthiest municipalities in both Portugal and the Iberian Peninsula as a whole. It is home to one of the largest foreign expat communities along the Portuguese Riviera and consistently ranks as one of the best places to live in Portugal.

This stunning villa, equipped with central heating, air conditioning and home automation, consists of:

- Living room with fireplace and stove
- Dining room
- Fully equipped kitchen with pantry and garage access
- Garden
- Suite with wardrobes
- 3 bedrooms
- Bathrooms
- Toilet

Outside, there is a beautiful garden with borehole, heated pool with jacuzzi, a small artificial lake and garage. Privacy, tranquillity, south-facing house overlooking the mountains are some of the many features that this property has to offer.

The property, very well maintained, was built with the highest quality standards.

Whether you are looking for an investment or a place of residence, this property is absolutely fantastic!

Contact Portugal Homes for more information about this stunning property!

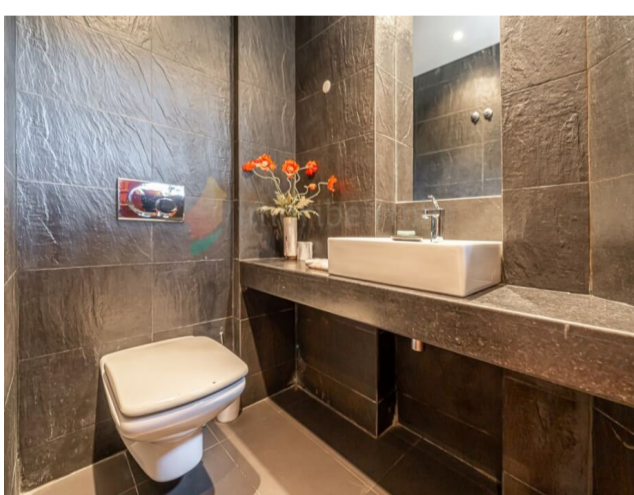
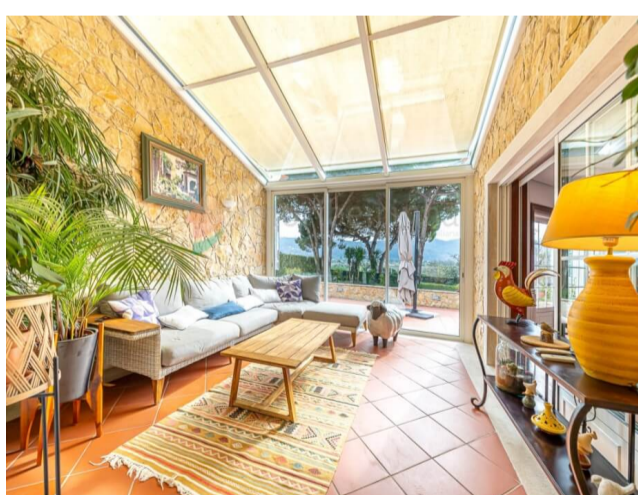
Check our other [properties for sale around Sintra](#). Read more information about the area in [our guide to Sintra](#).

Telephone: +351 213 471 603
Email: info@portugalhomes.com

Praça da Alegria 1, 3rd Floor, 1250-004 Lisboa, Portugal Licence AMI - 14414 | APEMIP 5940



Gallery



Telephone: +351 213 471 603
Email: info@portugalhomes.com

Praça da Alegria 1, 3rd Floor, 1250-004 Lisboa, Portugal Licence AMI - 14414 | APEMIP 5940



Additional Details

Attributes

Status Sold	Net Area 247sq m	Gross Area 247sq m
Condition Used		

Property Features

Outside	Pool	Amenities
A/C	Storage	Concierge Service
Closed Condominium	Garden	Gym
Suite	Alarm	Street Parking

Site Floorplan

Telephone: +351 213 471 603
Email: info@portugalhomes.com

Praça da Alegria 1, 3rd Floor, 1250-004 Lisboa, Portugal Licence AMI - 14414 | APEMIP 5940

