



€556,500

Ref: PW3593

92 sqm

Gorgeous 3 bedroom Villa complete with swimming pool located close to the Penina golf resort on Alvor/Portimao.

- Outside
- Amenities
- Concierge Service
- Fireplace
- Pool
- Heating
- Closed Condominium
- Alarm
- Seaside
- Storage
- Garden

Telephone: +351 213 471 603
Email: info@portugalhomes.com

Praça da Alegria 1, 3rd Floor, 1250-004 Lisboa, Portugal Licence AMI - 14414 | APEMIP 5940



Property Description

Stunningly modern Villa complete with swimming pool and supporting gardens; located just minutes from the famous Algarve beaches of Portimão and Alvor, this property would made a comfortable family home or a safe, sound and successful investment for yield return and appreciation. This particular location leaves little to be desired. International and Portuguese families choose to live here throughout 12 months of the year. International Schools and Hospitals are in close proximity as are world class golf courses and picturesque golden beaches. A simply delightful place to arrive to and a difficult place to leave.

The ground floor consists of a large open place kitchen, dining and living area and a separate smaller room which could be used as an office and a Guest WC. The living area opens up onto the terrace and BBQ area which then spills down to the decked outdoor swimming pool. Outside you will also find a car port and garden area. Upstairs you will find the 3 double bedrooms which are all fitted with storage units. 2 of the bedrooms (including the master en-suite bedroom) enjoy access to the 1st floor terrace which overlooks the swimming pool.

The property will be delivered with high end finishings, dual function air conditioning and a fully fitted kitchen with all white appliances included. Expected completion is July 2024.

Distances to local points of interest:

- Penina Golf resort and Spa is just 2.6km away or a 4 minute drive
- Alvor town centre is just 5.6 km away or a 9 minute drive
- Portimao city centre and the Aqua shopping centre is just 2.2km away or a 5 minute drive
- The historical centre of Lagos is a 22 minute drive away
- The Nobel British International school is just 18 minutes drive away.
- Faro Airport is a 45 minute drive.

Please contact Portugal Homes today for more information of this new, refreshing and well located Algarve property!

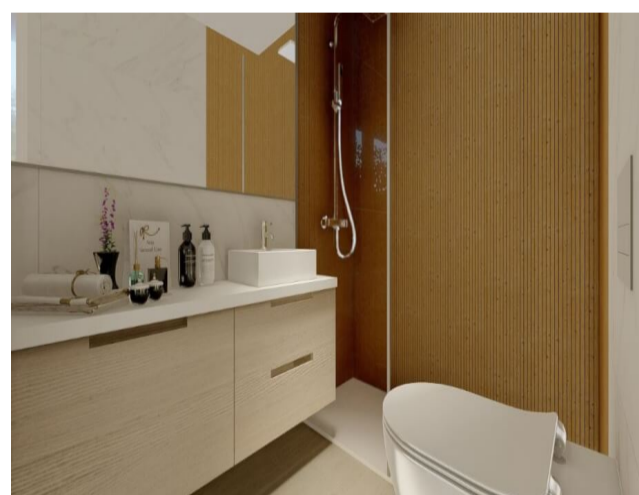
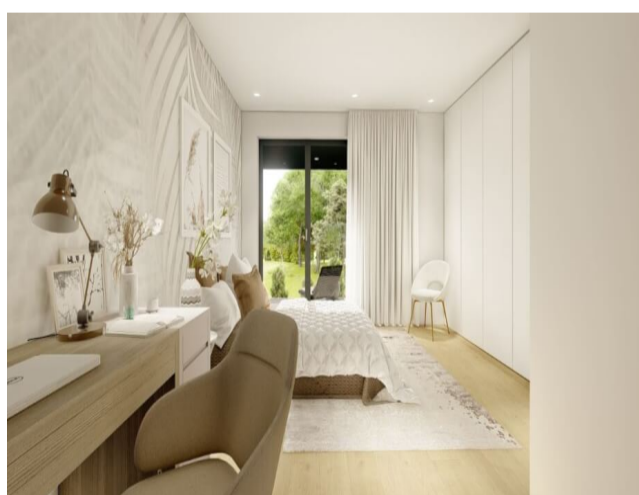
For more information on what the Algarve has to offer click on -

[Guide to Algarve by Real Estate Experts - Portugal Homes](#)

Book a viewing today!

www.portugalhomes.com

Gallery



Telephone: +351 213 471 603
Email: info@portugalhomes.com

Praça da Alegria 1, 3rd Floor, 1250-004 Lisboa, Portugal Licence AMI - 14414 | APEMIP 5940



Additional Details

Attributes

Status Reserved	Net Area 92sq m	Gross Area 405sq m
Floors 3	Condition Under Construction	Year Built 2023

Property Features

Outside	Pool	Seaside
Amenities	Heating	Storage
Concierge Service	Closed Condominium	Garden
Fireplace	Alarm	Street Parking
Outdoor Parking		

Site Floorplan

Telephone: +351 213 471 603
Email: info@portugalhomes.com

Praça da Alegria 1, 3rd Floor, 1250-004 Lisboa, Portugal Licence AMI - 14414 | APEMIP 5940

