



Terraces of Portimão Developments

€350,000

Ref: PW3561

A brand new development offering spacious 3 room apartments with generous outside space, elevator access and parking.

- Outside
- Amenities
- Concierge Service
- Balcony
- Pool
- Heating
- Lift
- Fireplace
- Seaside
- Storage
- Garden

Telephone: +351 213 471 603
Email: info@portugalhomes.com

Praça da Alegria 1, 3rd Floor, 1250-004 Lisboa, Portugal Licence AMI - 14414 | APEMIP 5940



Property Description

The “Terraces of Portimao” is a private luxury development that occupies a prime location in between the western Algarve hot-spots of Portimao and Alvor.

The building consists of just 6 apartments over 3 floors, **The penthouse units enjoy exclusive access to the 117m2 rooftop terraces which will be delivered with pre-installation for a private swimming pool or Jacuzzi.**

The second and third floors offer open green views including views of the Monchique mountains and the bay of Lagos

All units enjoy plenty of outside space and sunlight.

Designed for an A+ energy classification, every unit benefits from thermal and sound insulation.

The interior design focuses on comfort and safety with finishings that will be delivered in mouth-watering fashion!

Each apartment will include the following as standard

: Sanitary water heating through Daikin heat pump; Daikin multi-split.

: Air conditioning system with integrated Wi-Fi and A++ energy efficiency.

: Underground garage spaces with Wall box pre-installation, (for electric car charging).

: Video intercom with Wi-Fi system.

: Floating vinyl floors with high acoustic performance.

: Fully equipped kitchens with Bosch appliances; Silestone countertops;

: Electric blinds; built-in wardrobes; blinds with centralized closing; acoustic and thermal insulation.

The Project also foresees the exterior landscaping in the surroundings of the buildings for a natural integration in the adjacent area.

Distances to local points of interest include

: The Marina of Portimao is just 6.5km away or a 13 minute drive.

: Portimao Shopping centre and cinema complex is just 3.3km away or a 7 minutes drive.

: Praia do Vau beach is just 4.9 km away or a 9 minute drive.

: The gorgeous town of Alvor with its vibrant centre and golden beaches is just 5.1km away or a 9 minute drive.

: The historical centre of Lagos and Lagos Marina is just a 20 minute drive.

: Th Nobel Algarve International school is just 18 minutes drive.

: Faro International Airport is a 50 minutes drive.

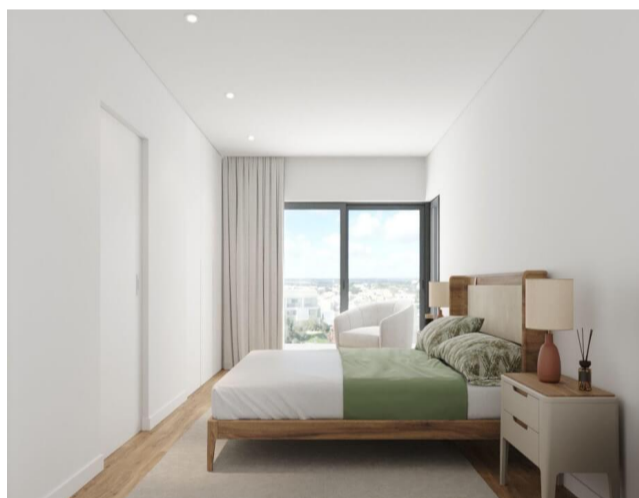
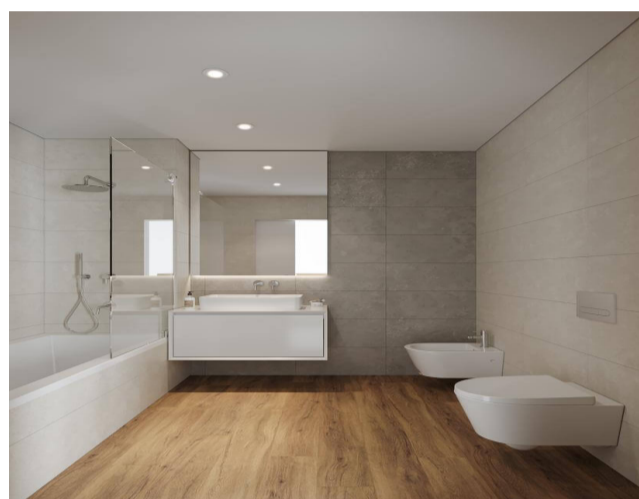
Please contact Portugal Homes today for more information on this unique luxury development !

Telephone: +351 213 471 603
Email: info@portugalhomes.com

Praça da Alegria 1, 3rd Floor, 1250-004 Lisboa, Portugal Licence AMI - 14414 | APEMIP 5940



Gallery



Telephone: +351 213 471 603
Email: info@portugalhomes.com

Praça da Alegria 1, 3rd Floor, 1250-004 Lisboa, Portugal Licence AMI - 14414 | APEMIP 5940



Additional Details

Property Features

Outside	Pool	Seaside
Amenities	Heating	Storage
Concierge Service	Lift	Garden
Balcony	Fireplace	Alarm
Street Parking	Outdoor Parking	Covered Parking

New Development Features

Telephone: +351 213 471 603
Email: info@portugalhomes.com

Praça da Alegria 1, 3rd Floor, 1250-004 Lisboa, Portugal Licence AMI - 14414 | APEMIP 5940



Development Units

Fraction	Bedrooms	Floor Size	Price
RC - L	2	119 sqm	Sold
RC - R	2	119 sqm	Sold
1 - L	2	119 sqm	€350,000
1 - R	2	119 sqm	€350,000
2 - L	2	119 sqm	Reserved
2 - R	2	119 sqm	Sold

Site Floorplan

Telephone: +351 213 471 603
Email: info@portugalhomes.com

Praça da Alegria 1, 3rd Floor, 1250-004 Lisboa, Portugal Licence AMI - 14414 | APEMIP 5940

