

€875,000

Ref: PW337

200 sqm

200 sqm apartment in Restelo facing the river.

Telephone: +351 213 471 603  
Email: [info@portugalhomes.com](mailto:info@portugalhomes.com)

Praça da Alegria 1, 3rd Floor, 1250-004 Lisboa, Portugal Licence AMI - 14414 | APEMIP 5940

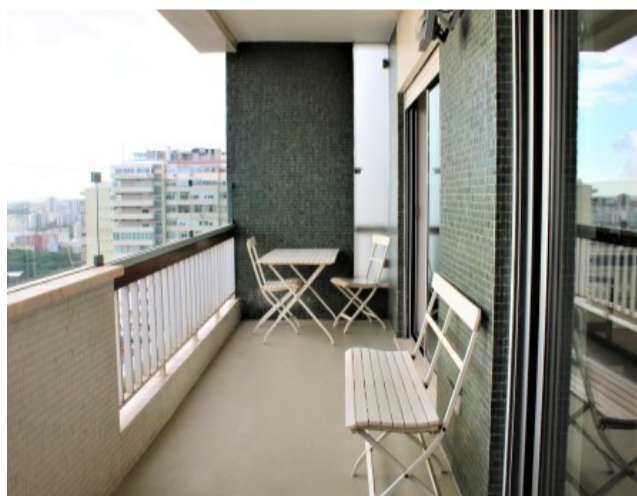
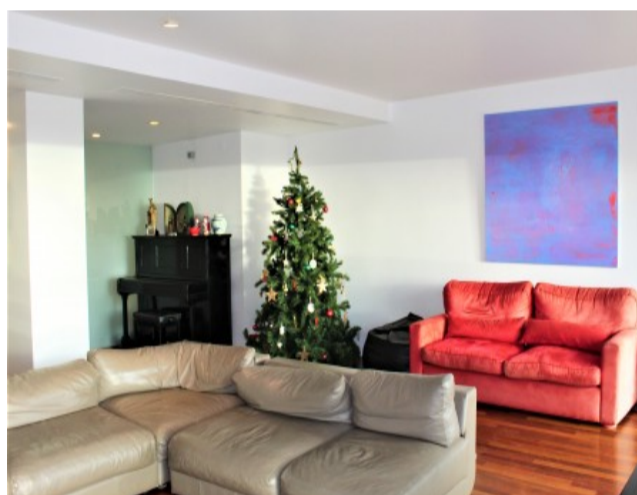
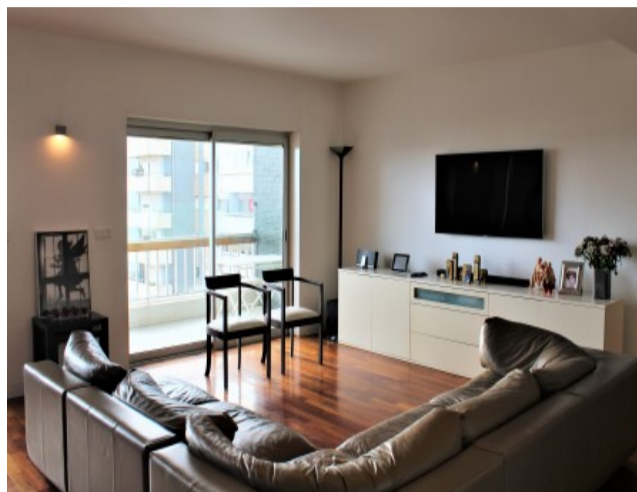


## Property Description

Find this fully refurbished 200sqm apartment, with an amazing river view, on a residential area.

Comprising a 58 sqm living room with a terrace, 5 bedrooms, 3 bathrooms + 1 toilette, fully equipped kitchen. Good quality fixtures and fittings.

Restelo is a quiet residential neighbourhood, known for its villas and large avenues going down the hill to Belém, the monumental district where one can find museums, Jeronimos Monastery, Belem Tower, Discoveries Monument among others.



## Additional Details

**Telephone:** +351 213 471 603  
**Email:** [info@portugalhomes.com](mailto:info@portugalhomes.com)

Praça da Alegria 1, 3rd Floor, 1250-004 Lisboa, Portugal Licence AMI - 14414 | APEMIP 5940



## Site Floorplan

