



Gramacho Golf Resort

€165,000 -
€398,125

Ref: PW321

Gramacho Golf resort is definitely one of Algarve's top resorts. Surrounded by a magnificent 18-hole golf course designed by Ronal Fream and Nick Price, Gramac

• Outside

• Pool

• Heating

Telephone: +351 213 471 603
Email: info@portugalhomes.com

Praça da Alegria 1, 3rd Floor, 1250-004 Lisboa, Portugal Licence AMI - 14414 | APEMIP 5940



Property Description

Gramacho Golf resort

Gramacho Golf resort is definitely one of Algarve's top resorts. Surrounded by a magnificent 18-hole golf course designed by Ronal Fream and Nick Price, Gramacho has all the facilities you need, from restaurants and bars to the SPA, without forgetting the gym, the swimming pool and the 24h security. Located just between Carvoeiro and the picturesque village of Ferragudo is for sure a holiday destination of excellence.

With amazing balconies with views over the Golf course and the countryside, the apartment are fully furnished with premium finishings.

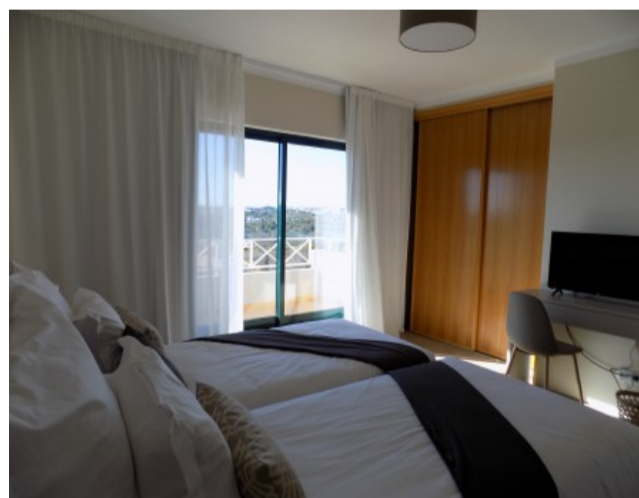
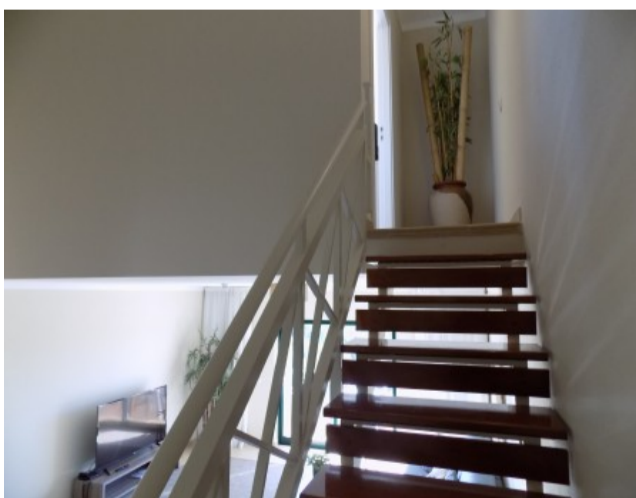
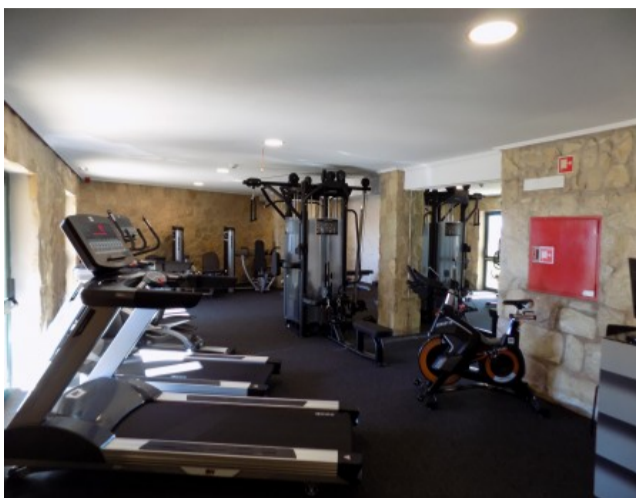
The existence of a reception area with snack bar and restaurant brings a comfort of a kick meal or even breakfast, in the basement a fully equipped gymnasium with sauna.

This apartment complex includes a beautiful swimming pool, jacuzi and several tennis courts.

View our other available [properties for sale around Lagoa](#) and [houses & villas in Estombar](#).

For more information on the area check our [guide to the Algarve](#).

Gallery



Telephone: +351 213 471 603
Email: info@portugalhomes.com

Praça da Alegria 1, 3rd Floor, 1250-004 Lisboa, Portugal Licence AMI - 14414 | APEMIP 5940



Additional Details

Attributes

Condition New

Property Features

Outside	Pool	Heating
---------	------	---------

New Development Features

Development Units

Fraction	Bedrooms	Floor Size	Price
1019	1	112 sqm	€268,750
1020	1	111 sqm	€271,800
1021	0	56 sqm	Sold
1022	1	104 sqm	€259,250
1023	0	55 sqm	Sold
1024	1	87 sqm	Sold
1025	0	63 sqm	Sold
1026	1	94 sqm	Sold
1027	0	56 sqm	Sold
1028	1	105 sqm	€273,025
1029	0	55 sqm	Sold
1030	1	105 sqm	€261,625
1032	1	105 sqm	€261,625
1033	2	141 sqm	€351,500
1034	2	141 sqm	€347,825
1035	2	144 sqm	€357,125
1017	2	159 sqm	€398,125
1016	0	56 sqm	Sold
1015	1	87 sqm	Sold
1014	0	62 sqm	Sold
1012	1	104 sqm	€259,750
1011	0	63 sqm	€165,000

Fraction	Bedrooms	Floor Size	Price
1010	1	105 sqm	€263,625
1009	0	56 sqm	Sold
1008	1	105 sqm	€273,025
1007	0	55 sqm	Sold
1005	0	56 sqm	Sold
1004	1	105 sqm	€257,075
1003	2	141 sqm	€351,500
1002	2	141 sqm	€351,500
1001	2	122 sqm	Sold

Site Floorplan

Telephone: +351 213 471 603
Email: info@portugalhomes.com

Praça da Alegria 1, 3rd Floor, 1250-004 Lisboa, Portugal Licence AMI - 14414 | APEMIP 5940

