



**€465,000**

**Ref: PW3035**

**124 sqm**

Golden Visa qualified modern townhouse in condominium with spectacular sea views

- Ocean View
- Seaside
- Central heating
- Closed Condominium
- Outside
- Amenities
- Storage
- Lift
- Pool
- Heating
- Concierge Service

Telephone: +351 213 471 603  
Email: [info@portugalhomes.com](mailto:info@portugalhomes.com)

Praça da Alegria 1, 3rd Floor, 1250-004 Lisboa, Portugal Licence AMI - 14414 | APEMIP 5940



## Property Description

Sitting majestically on a hill proudly overlooking the spectacular coastal resort of Salema, this modern townhouse in Golden Visa qualified territory is a delightful and modern property ideal as a family home or rental option.

While much of the central coastline of the Algarve has seen heavy development, the west remains relatively unspoiled. Salema is a small town with a long history as a fishing village. The sandy beach, flanked on either side by the rugged and rocky cliffs the Algarve is so famous for is truly stunning. Central to the beach is the boat launch, where you'll often see fisherman tending to their boats or their nets.

The village, easily accessible from the N125 - the Western Algarve's main artery, is a myriad of sloping and winding, narrow cobblestone streets so typical of the Portuguese landscape.

Dotted with an array of renowned seafood restaurants hawking the day's catch and cosy little bars and cafes, the picturesque village is ideal for those looking for relaxing surroundings.

For the more active there's some stunning clifftop walks and biking routes to get stuck into. The village is a regular stop off point for those hikers undertaking the World renowned 'Fisherman's Trail'. The Algarve's Western coastline has long been a must visit for the Worldwide surfing community.

The townhouse itself is perched proudly on the hill of the village's Western side and offers simply breathtaking views of the beach and out to sea. From home to the beach is a pleasant stroll lasting just a few minutes.

The property consists of habitable area of 124 square metres and a further 58 outdoors

The modern and tasteful design coupled with the natural light that flourishes throughout the property gives a fresh and open feel throughout.

The downstairs area is of a sizeable open plan and offers the magnificent view synonymous with the property. Consisting of lounge / dining area, modern and equipped kitchen and guest bathroom this level is a bright, comfortable living area.

Up the stairs and the view is even more spectacular. The large balcony faces the morning sun and delivers the perfect way to start the day with coffee and breakfast.

The 2 large bedrooms are both naturally, en suite and complete with bidet.

Outside areas include sun terrace, landscaped gardens and extra parking.

The closed condominium includes the swimming pool and night security - comforting, even in a country considered as one of the World's safest.

There is also discounted golfing on the nearby renowned course, twinned with the condominium.

The condominium is of course, touristically licenced therefore making it highly rentable within the positively thriving Algarvian rental market.

Other nearby points of interest include -

- The closest school is just 3 minutes drive, with others a 7 or 15 minute drive
- The closest Golf course is 4 minutes drive, with 4 or 5 more within 20 minutes

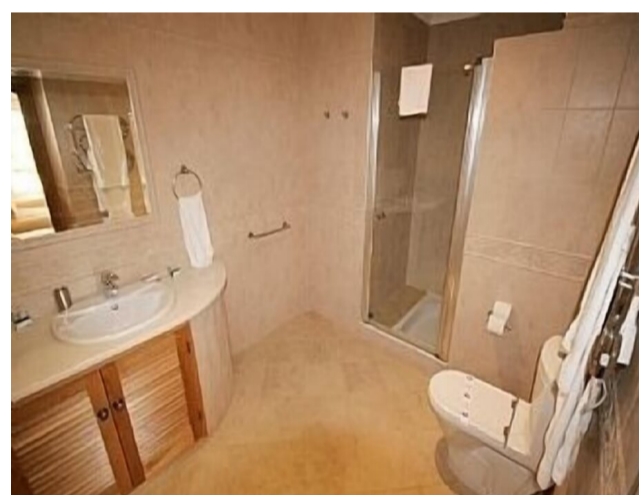
- Sagres, the South Western tip of Europe and an enchanting little town in it's own right, is a 15 minute drive away
- The large supermarket is 7 minutes away, though there are a selection of mini markets in the town
- Bars, cafes, restaurants and the beach - walking distance
- All civic amenities can be found in nearby Budens along with healthcare, Post Offices etc
- Praia da Luz, with it's World famous beach, is only a 7 minute drive
- Lagos centre, with it's cosmopolitan nightlife and renowned restaurants is within a 14 minute drive. Lagos is a vibrant (small) city, boasting beaches, bars and boutiques. Currently undergoing an upsurge in tourism, all the necessary amenities can be found here such as Hospitals, Dentists, Sports arenas and clubs, Admin centres, banks and transport hubs (Bus and Train) connecting to Lisbon and the entire Algarve. The beautiful Marina of Lagos is also to be found here.

View our other available [properties for sale around Salema](#) and [houses & villas in the Algarve](#).

For more information on the area check our [guide to the Algarve](#).



## Gallery



Telephone: +351 213 471 603  
Email: [info@portugalhomes.com](mailto:info@portugalhomes.com)

Praça da Alegria 1, 3rd Floor, 1250-004 Lisboa, Portugal Licence AMI - 14414 | APEMIP 5940





## Additional Details

### Attributes

<b>Status</b> Sold	<b>Net Area</b> 124sq m	<b>Gross Area</b> 124sq m
<b>Floors</b> 2	<b>Condition</b> Used	<b>Year Built</b> 2009

### Property Features

Ocean View	Outside	Pool
Seaside	Amenities	Heating
Central heating	Storage	Concierge Service
Closed Condominium	Lift	Garden
Gym	Fireplace	Security
Alarm	Street Parking	Outdoor Parking
Covered Parking		

## Site Floorplan

