



€198,500

Ref: PW2331

35 sqm

35m2 Duplex apartment in the heart of historical Lisbon. Close to Santa Apolonia train and metro station.

• Heating

• Garden

Telephone: +351 213 471 603
Email: info@portugalhomes.com

Praça da Alegria 1, 3rd Floor, 1250-004 Lisboa, Portugal Licence AMI - 14414 | APEMIP 5940



Property Description

This 35m2 duplex apartment is located in the heart of the historical district of Alfama.

Cute and cosy, this apartment is split into 2 levels.

On the ground floor is the kitchen, dining area and bathroom.

Upstairs is a spacious bedroom with built in storage units and a small living area.

Perfect for a couple who want to experience life in the oldest central neighbourhood in the city while enjoying fast and easy access to the rest of the capital.

With Santa Apolonia metro and train station just a 6 minute walk away (and the university just 4 minutes walk away) this property is perfectly located for the mid and long term rental markets and would enjoy high occupancy throughout the year with a competitive yield return.

Nestled in between the Castle of St Jorge and the river Tejo, Alfama is a labyrinth of narrow cobbled streets with terraced cafes at every turn. Within this diverse and charismatic district are many of Lisbon's most important historic landmarks including The Se Cathedral, The National Pantheon and The Igreja da Santo Antonio.

Tourists flock to Alfama for it's vast selection of Portuguese restaurants and Fado cafes. Don't be surprised if dinner turns into a concert without warning. Alfama is the home of Fado and the best shows are often in the spots that are hardest to find.

Distances to local points of interest

: Santa Apolonia metro and train station is just 350 metres or 6 minutes walk away.

: The National Pantheon is just 300 metres or 5 minutes walk away.

: The banks of the river Tejo are just 300 metres or 5 minutes walk away.

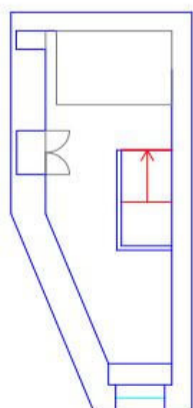
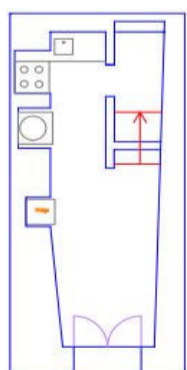
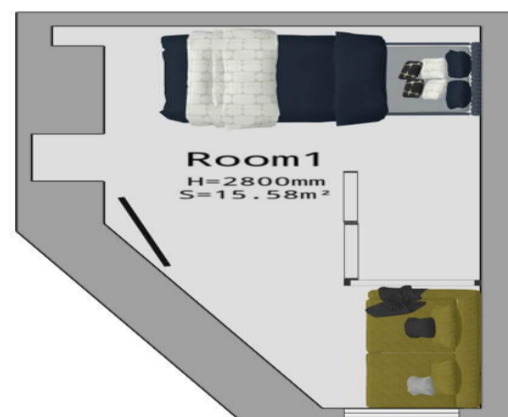
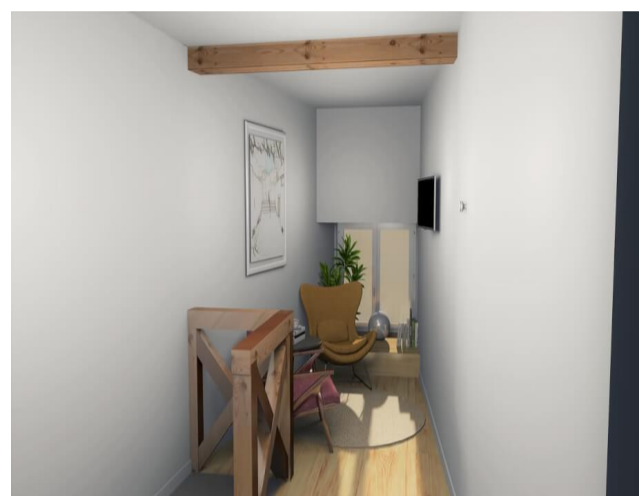
: The ISPA University of Psychology and Bioscience is just 260 metres or 4 minutes walk away.

: Bars, restaurants, shops and cafes are within 1 minute walk from the front door.

Contact Portugal Homes today for more information on this slice of historical Portuguese real estate!

Read our [guide to Lisbon](#) or check our offer of [properties for sale in Lisbon](#) and [Alfama neighbourhood](#).

Gallery



Telephone: +351 213 471 603
Email: info@portugalhomes.com

Praça da Alegria 1, 3rd Floor, 1250-004 Lisboa, Portugal Licence AMI - 14414 | APEMIP 5940



Additional Details

Property Features

Heating

Garden

Site Floorplan

Telephone: +351 213 471 603
Email: info@portugalhomes.com

Praça da Alegria 1, 3rd Floor, 1250-004 Lisboa, Portugal Licence AMI - 14414 | APEMIP 5940

