

Morais 9

€0

Ref: PW2321

Morais 9 This amazing project is a fully refurbished building with historic preservation in Penha de França. This project consists in 9 two-bedroom and 1 three-bedrooms, one apartment per floor that provides more privacy.

Telephone: +351 213 471 603
Email: info@portugalhomes.com

Praça da Alegria 1, 3rd Floor, 1250-004 Lisboa, Portugal Licence AMI - 14414 | APEMIP 5940



Property Description

Morais 9

This amazing project is a fully refurbished building with historic preservation in Penha de França.

This project consists in 9 two-bedroom and 1 three-bedrooms, one apartment per floor that provides more privacy.

Everything is located at walking distance, restaurants to experience the portuguese gastronomy as well as restaurants of many other nationalities, various gardens to enjoy this sunny city, a market to buy fresh food as well as many grocery stores and supermarkets, banks, gyms, hair salons, bookshops and so on.

There's also many bus stops and metro stations to get you anywhere in the city.

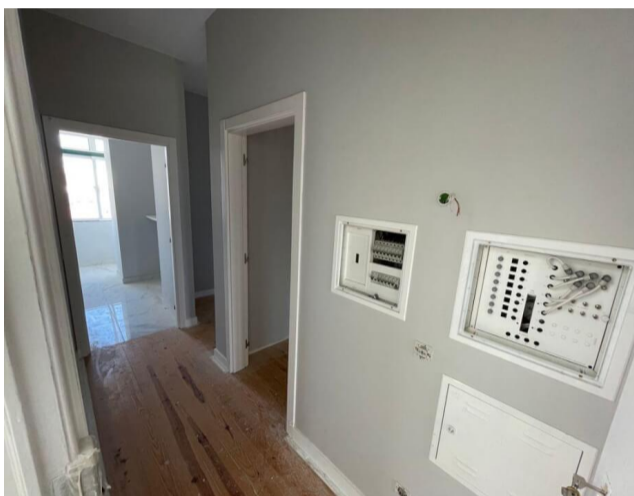
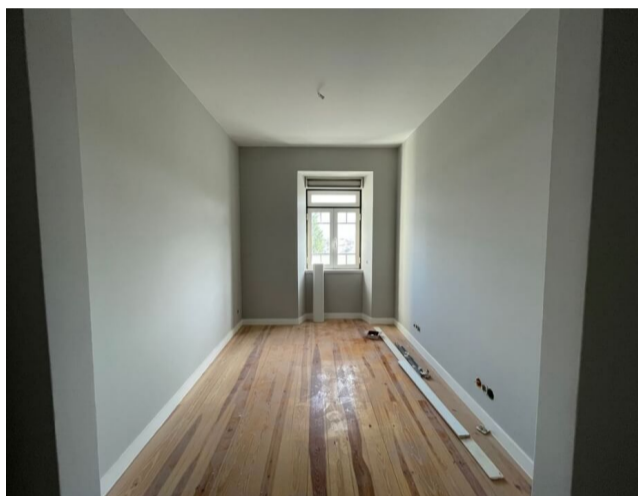
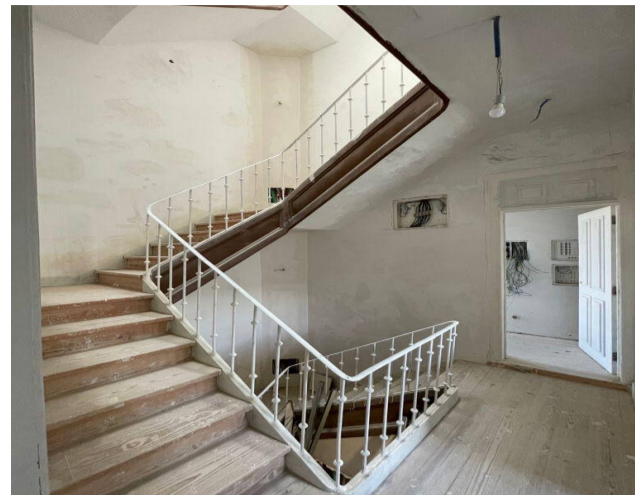
Penha de França is only 10 minutes away from Graça's neighborhood and less than 5 minutes away from riverside, Alfama, the center of Lisbon's fado nightlife.

All apartments have high quality finishes and are fully equipped.

All the 2 bedroom units come fully furnished and offer 3% over 3 years.

View our other [properties for sale in Lisbon](#) and [Penha de França area](#) and read our [guide to Lisbon city](#).

Gallery



Telephone: +351 213 471 603
Email: info@portugalhomes.com

Praça da Alegria 1, 3rd Floor, 1250-004 Lisboa, Portugal Licence AMI - 14414 | APEMIP 5940



Additional Details

Attributes

Condition
Refurbished

New Development Features

Development Units

Fraction	Bedrooms	Floor Size	Price
Unit A	3	102 sqm	Reserved
Unit B	2	58 sqm	Reserved
Unit C	2	58 sqm	Reserved
Unit D	2	58 sqm	Reserved
Unit E	2	58 sqm	Reserved

Site Floorplan

Telephone: +351 213 471 603
Email: info@portugalhomes.com

Praça da Alegria 1, 3rd Floor, 1250-004 Lisboa, Portugal Licence AMI - 14414 | APEMIP 5940

