

€0

Ref: PW2088

Gorgeous renovated building, close to Rossio square in downtown Lisbon.

- Heating
- Closed Condominium
- Garden
- Street Parking

Telephone: +351 213 471 603
Email: info@portugalhomes.com

Praça da Alegria 1, 3rd Floor, 1250-004 Lisboa, Portugal Licence AMI - 14414 | APEMIP 5940



Property Description

This 4 floor building has just been renovated to a very high standard. Impeccable levels of finishing in a solid and historical building.

Comprising 4 apartments that allow for individual rental on the mid and long term markets.

The ground floor of this building boasts 2 studio apartments with separate entrances.

On the 1st floor is a 2 bedroom apartment and the 2nd floor reaches up to the 3rd with a spacious duplex offering an ensuite master bedroom and plenty of storage space.

All apartments are bright, light and pleasing on the eye with hard wooden flooring throughout and marble-finished modern bathrooms.

The kitchen units are complete and fitted with all new appliances.

Mouraria literally means “Moorish quarter.” It was where the Moors resided when King Afonso Henriques conquered the city in 1147.

This is postcard historical Lisbon. A safe and renowned cultural pocket of the capital's city centre and just a few minutes stroll to the large open squares of Martim Moniz and Rossio.

Furthermore, Mouraria foots one of Lisbon's 7 hills. The breathtaking 'Miradouros' of Graça and Penha da Franca are easily accessed by foot or with the help of the outdoor city escalators. These viewing platforms are a hotspot for early-risers who like to wake up with the city, The grassy banks and terraced cafes are enjoyed by locals and tourists alike.

In terms of accessibility, Mouraria is well connected to both the Green and Blue line metro links and Rossio's train station which serves the UNESCO world heritage site of Sintra.

Distances to local points of interest

: Martim Moniz Square and metro station (Green line) offers a wide selection of world commerce, restaurants and terraces. This is 150 metres away or 2 minutes walk.

: Rossio Square is Lisbon's most renowned central square. This is where the blue line metro connects with the green line. A public transport hub that is teeming with commuters at all hours of the day. Rossio is just 700 metres or 8 minutes walk away.

: The 'Miradoura da Graça' viewing platform is just 300 metres or 6 minutes walk.

: The capital's most exclusive street of Avenida Liberdade with it's high-end fashion outlets, The Hard Rock Cafe, banks and metro stations is just 100 metres or 13 minutes walk.

: 'Jardim da cerca da graça' is a popular city park. Children's play areas and outdoor terraces provide a green retreat from city life. This is just 150 metres or 3 minutes walk.

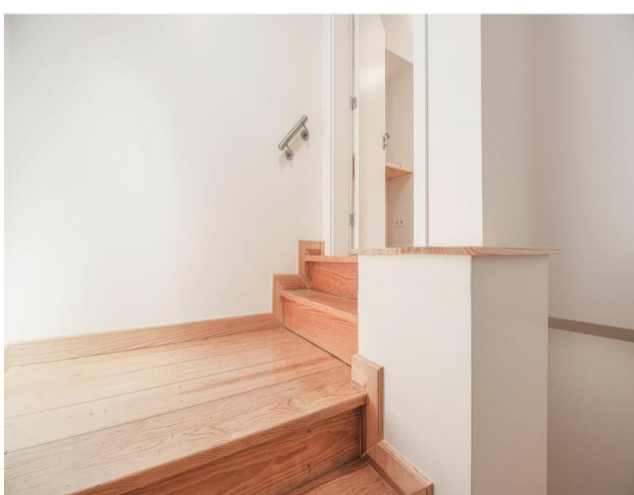
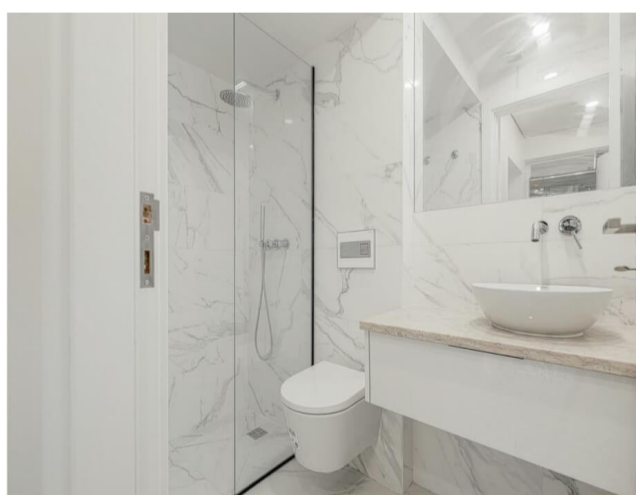
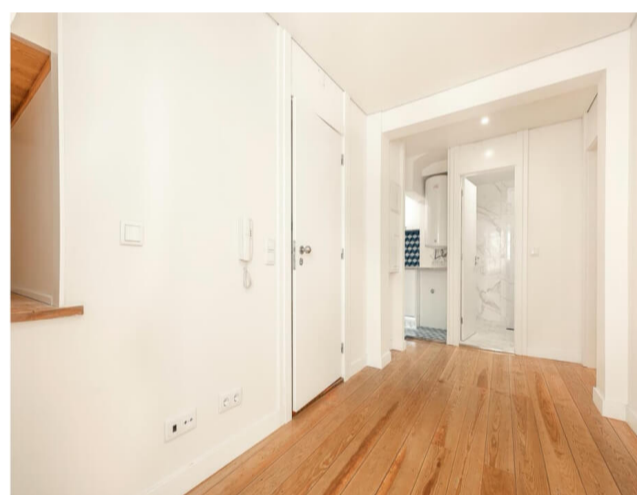
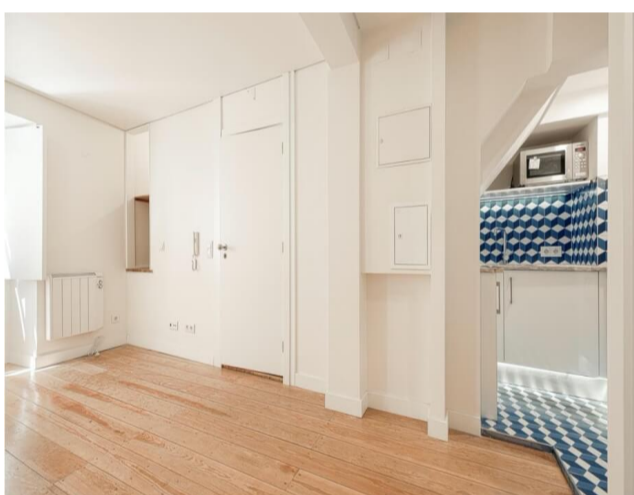
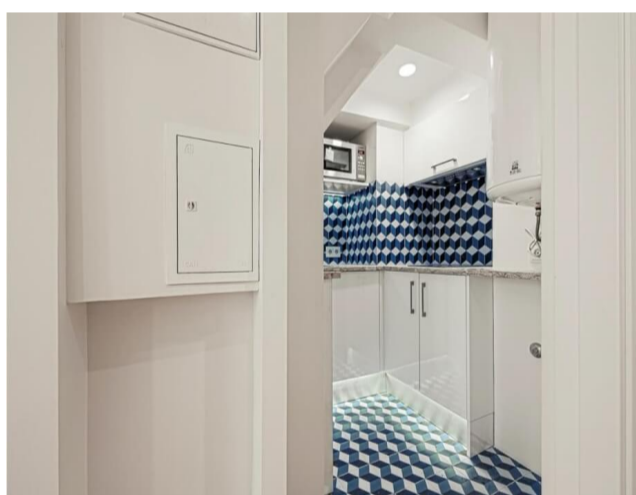
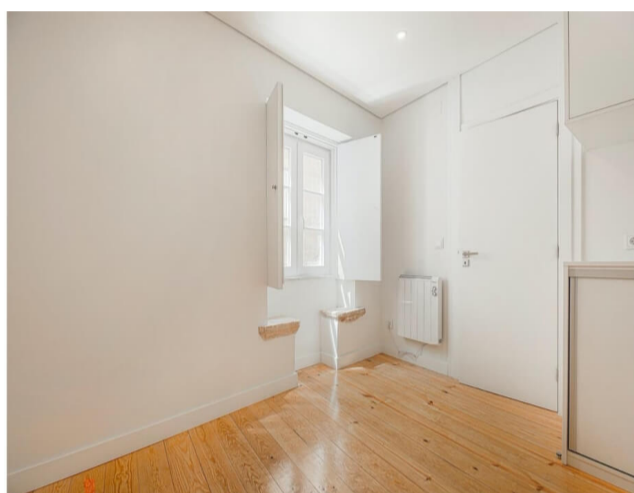
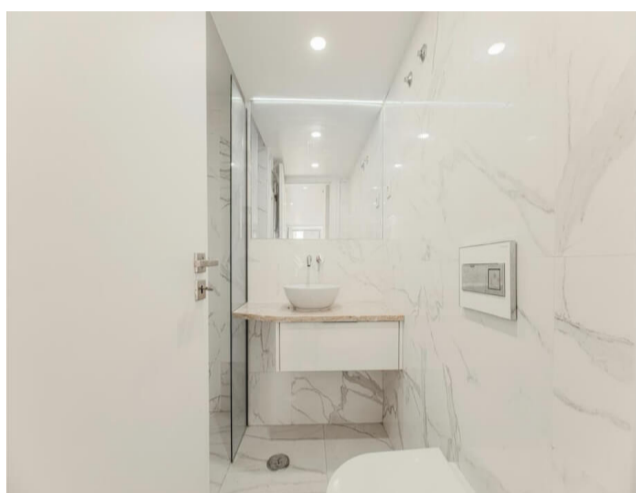
This is an obvious choice for investors looking for multiple units within the same building in an area of high rentability throughout 12 months of the year. A renovated building in Lisbon's city centre. A rare and ready investment.

The price of this building has been heavily discounted for a fast sale and is strictly non-negotiable

Please contact Portugal Homes today for more information or to book a viewing!

Find our other [properties for sale around Martim Moniz](#) and [Mouraria area](#). Read more information about the city in [our complex Lisbon guide](#).

Gallery



Telephone: +351 213 471 603
Email: info@portugalhomes.com

Praça da Alegria 1, 3rd Floor, 1250-004 Lisboa, Portugal Licence AMI - 14414 | APEMIP 5940



Additional Details

Attributes

Status Sold	Floors 4	Condition Refurbished
-----------------------	--------------------	---------------------------------

Property Features

Heating	Closed Condominium	Garden
Street Parking		

Site Floorplan

Telephone: +351 213 471 603
Email: info@portugalhomes.com

Praça da Alegria 1, 3rd Floor, 1250-004 Lisboa, Portugal Licence AMI - 14414 | APEMIP 5940

