

**€310,000**

**Ref: PW202**

**108 sqm**

T1 + 1 renovated in 2015 with 108m2, 2 minutes walk from the Arroios metro station.

Telephone: +351 213 471 603  
Email: [info@portugalhomes.com](mailto:info@portugalhomes.com)

Praça da Alegria 1, 3rd Floor, 1250-004 Lisboa, Portugal Licence AMI - 14414 | APEMIP 5940



## Property Description

Former 5 bedroom apartment, completely remodelled in 2015 and converted into a spacious 108m<sup>2</sup> 2 bedroom.

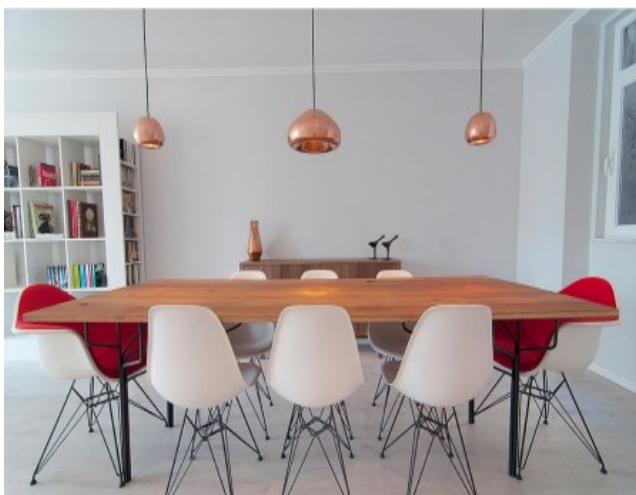
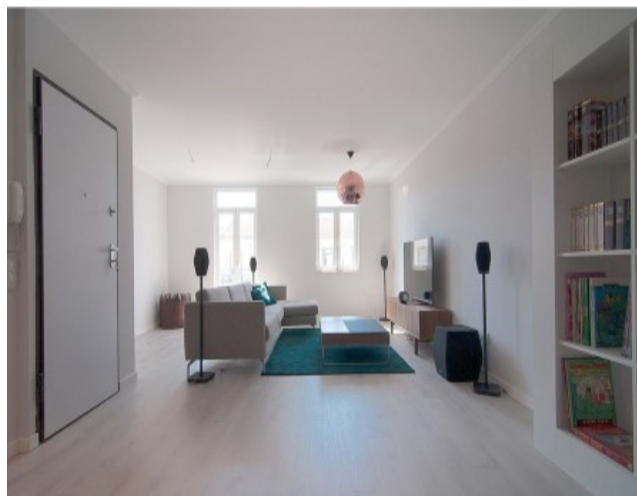
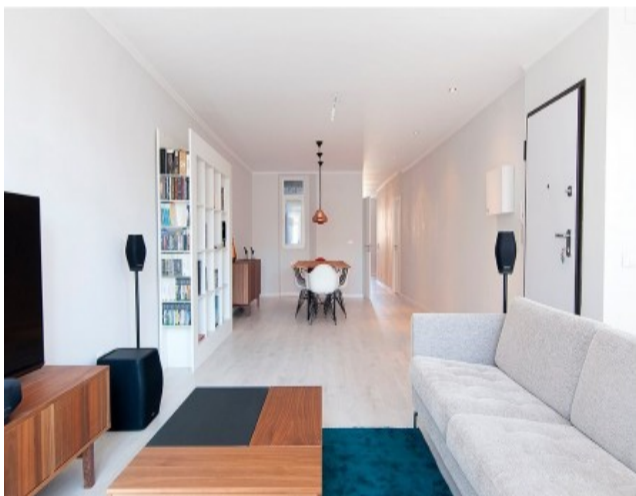
New water/gas/electrical installation, double glazed aluminum windows and armored door, pre-installed AC wiring and full kitchen with 10m<sup>2</sup>.

The front of the apartment is south facing, with a 43m<sup>2</sup> living room with amazing natural light, long balcony with a fantastic view over Morais Soares street and Praça do Chile.

The apartment includes a generous 14m<sup>2</sup> suite, with a modern, quality bathroom, as well as an 8m<sup>2</sup> extra office/guest room and a half-bath.

There's also a pantry and a second, closed balcony with 7m<sup>2</sup> and lots of extra storage space.

The apartment is located on a 4th floor, no elevator, centennial building with a traditional Portuguese tile façade. A privileged location close to pharmacies/post office/supermarkets, a 2 minute walk away from the Arroios subway station, bus stop in front of the building, 15 minute walk from Saldanha, in high demand by both tourists and students from the nearby university (IST), a great investment opportunity.





**Telephone:** +351 213 471 603  
**Email:** [info@portugalhomes.com](mailto:info@portugalhomes.com)

Praça da Alegria 1, 3rd Floor, 1250-004 Lisboa, Portugal Licence AMI - 14414 | APEMIP 5940



## Additional Details

### Attributes

<b>Status</b> Sold	<b>Net Area</b> 108sq m	<b>Gross Area</b> 108sq m
<b>Floors</b> 1	<b>Condition</b> New	

## Site Floorplan

**Telephone:** +351 213 471 603  
**Email:** [info@portugalhomes.com](mailto:info@portugalhomes.com)

Praça da Alegria 1, 3rd Floor, 1250-004 Lisboa, Portugal Licence AMI - 14414 | APEMIP 5940

