

€375,000

Ref: PW2015

101 sqm

Gorgeous two bedroom townhouse located just south of the river Tejo.

- Ocean View
- Heating
- Gym
- Outside
- Closed Condominium
- Seaside
- Garden

Telephone: +351 213 471 603  
Email: [info@portugalhomes.com](mailto:info@portugalhomes.com)

Praça da Alegria 1, 3rd Floor, 1250-004 Lisboa, Portugal Licence AMI - 14414 | APEMIP 5940



## Property Description

This unique and riverside townhouse is located in Porto Brandao which is just south of Lisbon's river Tejo.

Completely remodelled in 2019, this two storey home is bright, clean and impeccably finished.

Furthermore, this property includes supporting land to the rear. An ideal spot for growing vegetables whilst taking in the views of the river and country's capital. The property and land are south west facing which offers tremendous sun exposure.

### **This property is comprised of**

: A spacious front terrace with a BBQ area. This terrace is accessible from the living/dining area through sliding and double glazed glass doors.

: A warm open plan living room and kitchen area with plenty of space to entertain guests.

: A downstairs WC with clean and modern tiled design.

: A total of 567 m2 of private land with views of the River Tejo.

: Two double bedrooms with plenty of natural light.

: A spacious corridor with full length storage units.

: A large upstairs bathroom next to the master bedroom. This bathroom features a separate and self standing designer bath-tub, a shower unit and two sinks.

: Hard and polished wooden flooring throughout ( with the exception of the kitchen and bathrooms )

: Free and easy parking outside.

Porto Brandao offers fast and easy access to Lisbon by Ferry boat.

Regular services run direct to Lisbon's Belem district with a journey time of around 12 minutes.

This is a passenger and vehicle ferry with seating up top and cars and motorcycles below. (Vehicles can enter at Trafaria or Belem)

><https://ttsl.pt/passageiros/horarios-de-ligacoes-fluviaais/partidas-trafaria/>

Porto Brandao is in fast development with plans for three Hotels ( including a 5 star hotel) underway.

Fresh fish restaurants offer the 'catch of the day' to the friendly locals and visiting tourists.

### **Distances to local points of interest**

: Restaurant Porto Brandao is just 130 metres or 2 minutes walk

: The Ferry boat Port to Lisbon city is just 260 metres or 3 minutes walk away.

: The beach town of Costa da Caparica with its countless bars, restaurants and commerce is just 8 minutes drive away.

: The new University of science and technology is just 22 minutes walk or 5 minutes drive away.

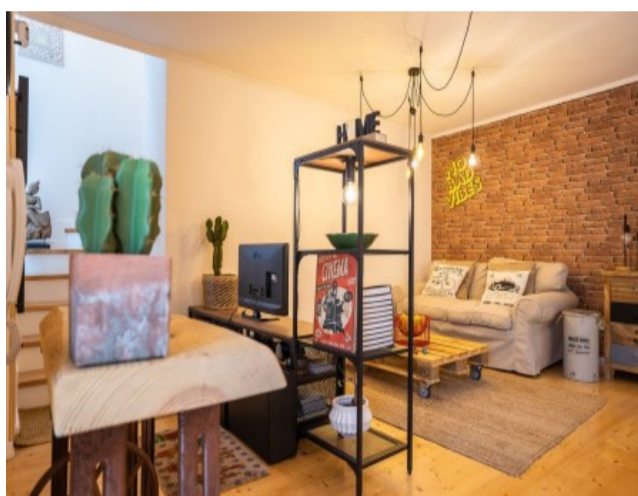
><https://www.fct.unl.pt/en/about-fct/overview>

: The large supermarket of Continente is just 5 minutes drive away.

**Please contact Portugal Homes today for more information on this unique and exclusive opportunity.**



## Gallery



Telephone: +351 213 471 603  
Email: [info@portugalhomes.com](mailto:info@portugalhomes.com)

Praça da Alegria 1, 3rd Floor, 1250-004 Lisboa, Portugal Licence AMI - 14414 | APEMIP 5940



## Additional Details

### Attributes

<b>Status</b> Sold	<b>Net Area</b> 101sq m	<b>Gross Area</b> 152sq m
<b>Floors</b> 2	<b>Condition</b> Refurbished	

### Property Features

Ocean View	Outside	Seaside
Heating	Closed Condominium	Garden
Gym		



## Site Floorplan

**Telephone:** +351 213 471 603  
**Email:** [info@portugalhomes.com](mailto:info@portugalhomes.com)

Praça da Alegria 1, 3rd Floor, 1250-004 Lisboa, Portugal Licence AMI - 14414 | APEMIP 5940

