



€950,000

Ref: PW1555

193 sqm

Charming four bedrooms villa in the natural park of Sintra-Cascais

- Outside
- Central heating
- Gym
- Amenities
- Closed Condominium
- Suite
- Heating
- Garden
- Alarm

Telephone: +351 213 471 603
Email: info@portugalhomes.com

Praça da Alegria 1, 3rd Floor, 1250-004 Lisboa, Portugal Licence AMI - 14414 | APEMIP 5940



Property Description

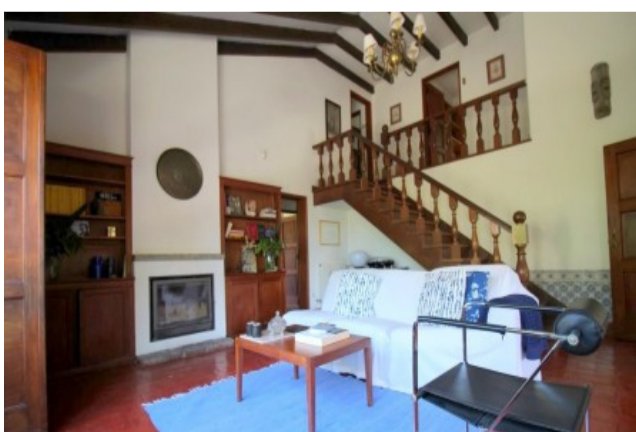
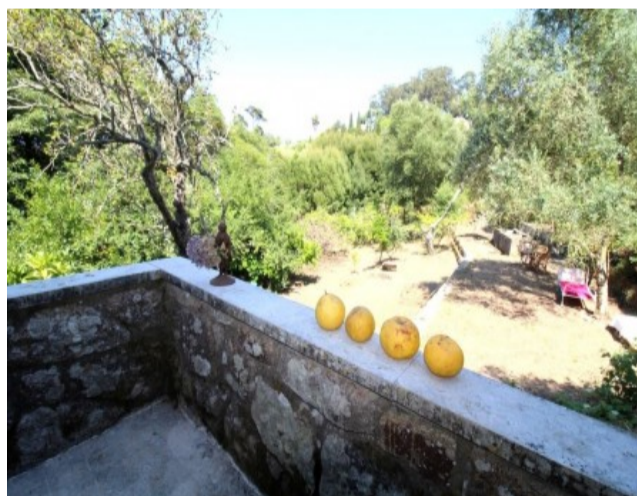
Charming four bedrooms villa in the natural park of Sintra Cascais

Lovely villa with stunning views over the Serra de Sintra. The property features a four bedroom character house with generous areas, including plenty of built-in storage, a living room with an enclosed fireplace, another great living space great for entertaining, a wine cellar, a big terrace, a large garden and a garage. The property has been very well maintained and it was built embracing the time's inherent character, including exposed wooden beams and traditional Portuguese tiles.

Located in the Serra de Sintra, in the natural park of Sintra-Cascais, this charming villa from the 1950s is presented for sale in excellent condition. True natural beauty, the house is set in a beautiful garden, with lush vegetation in one of the most sought after areas of Sintra. Come live in harmony with nature less than 40 minutes from Lisbon.

This fantastic property offers an incredible opportunity, either as an investment or to enjoy your life in one of the most beautiful regions in Lisbon.

If you would like more information, feel free to reach our team today. We would be delighted to assist you!



Telephone: +351 213 471 603
Email: info@portugalhomes.com

Praça da Alegria 1, 3rd Floor, 1250-004 Lisboa, Portugal Licence AMI - 14414 | APEMIP 5940



Additional Details

Attributes

Status Sold	Net Area 193sq m	Gross Area 193sq m
Year Built 1950		

Property Features

Outside	Amenities	Heating
Central heating	Closed Condominium	Garden
Gym	Suite	Alarm

Site Floorplan

Telephone: +351 213 471 603
Email: info@portugalhomes.com

Praça da Alegria 1, 3rd Floor, 1250-004 Lisboa, Portugal Licence AMI - 14414 | APEMIP 5940

