

**€585,000**

**Ref: PW143**

**120 sqm**

New 3 bedroom apartment in Campo de Ourique

Telephone: +351 213 471 603  
Email: [info@portugalhomes.com](mailto:info@portugalhomes.com)

Praça da Alegria 1, 3rd Floor, 1250-004 Lisboa, Portugal Licence AMI - 14414 | APEMIP 5940



## Property Description

Campo de Ourique is a charming residential and commercial neighborhood in the center of Lisbon.

By the late XIX century farmlands gave place to an organized grid pattern neighborhood. Nowadays we still find many buildings from that early stage of construction among others more modern.

It is filled with small traditional commerce that still serves most of the residential daily needs. Just a few minutes away from Amoreiras, the French School and Estrela Campo de Ourique offers a unique and traditional lifestyle.

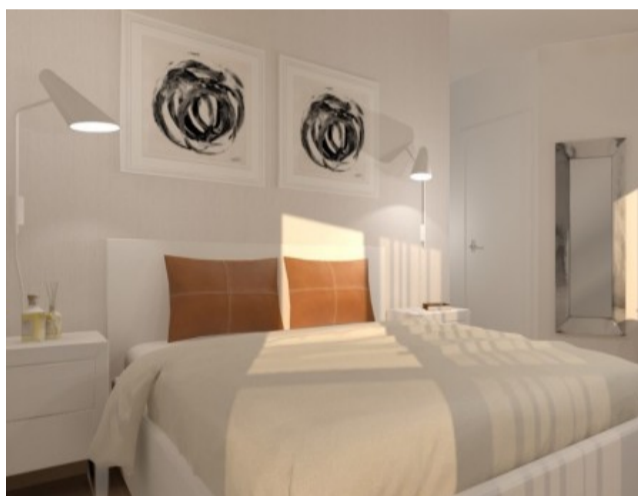
This particular unit is part of a new building that includes garage and elevator.

The apartment features 3 bedrooms, 2 bathrooms, a bright living room and a fully equipped kitchen.

Check our other available [properties for sale in Campo de Ourique](#) and [houses in Lisbon](#).

Interested in discovering Lisbon? Find out more about the city in our [guide to Lisbon](#).

## Gallery



Telephone: +351 213 471 603  
Email: [info@portugalhomes.com](mailto:info@portugalhomes.com)

Praça da Alegria 1, 3rd Floor, 1250-004 Lisboa, Portugal Licence AMI - 14414 | APEMIP 5940



## Additional Details

### Attributes

<b>Status</b> Sold	<b>Net Area</b> 120sq m	<b>Gross Area</b> 120sq m
<b>Floors</b> 1	<b>Condition</b> New	<b>Year Built</b> 2018

# Site Floorplan

