

€575,000

Ref: PW142

120 sqm

New 2 bedroom apartment in Campo de Ourique

Telephone: +351 213 471 603
Email: info@portugalhomes.com

Praça da Alegria 1, 3rd Floor, 1250-004 Lisboa, Portugal Licence AMI - 14414 | APEMIP 5940



Property Description

Campo de Ourique is a charming residential and commercial neighborhood in the center of Lisbon.

By the late XIX century farmlands gave place to an organized grid pattern neighborhood. Nowadays we still find many buildings from that early stage of construction among others more modern.

It is filled with small traditional commerce that still serves most of the residential daily needs. Just a few minutes away from Amoreiras, the French School and Estrela Campo de Ourique offers a unique and traditional lifestyle.

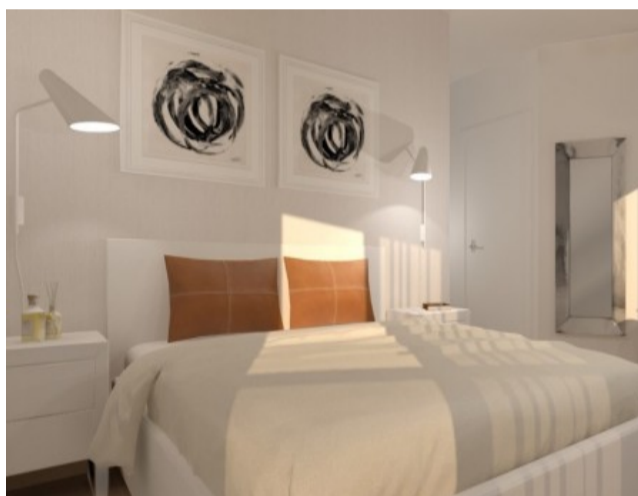
This particular unit is part of a new building that includes garage and elevator.

The apartment features 2 bedrooms, one of which a suite, 2 bathrooms, a bright living room and a fully equipped kitchen.

View our other [properties for sale in Campo de Ourique](#) and [houses in Lisbon](#).

Also, you can find out more about the city in our [guide to Lisbon](#).

Gallery



Additional Details

Attributes

Status Sold	Net Area 120sq m	Gross Area 120sq m
Floors 1	Condition New	Year Built 2018

Site Floorplan



Telephone: +351 213 471 603
Email: info@portugalhomes.com

Praça da Alegria 1, 3rd Floor, 1250-004 Lisboa, Portugal Licence AMI - 14414 | APEMIP 5940

