

**€199,000**

**Ref: PW1359**

**30 sqm**

Excellent one bedroom apartment in Mouraria.

Telephone: +351 213 471 603  
Email: [info@portugalhomes.com](mailto:info@portugalhomes.com)

Praça da Alegria 1, 3rd Floor, 1250-004 Lisboa, Portugal Licence AMI - 14414 | APEMIP 5940



## Property Description

Mouraria is one of the most traditional neighborhoods in the city of Lisbon.

Currently, Mouraria is considered one of the safest neighborhoods in the capital, it is a meeting place for people from different cultures and, simultaneously, a place that keeps its old popular traditions alive, as can be

confirmed by the existence of several fado houses, bars, taverns and cultural and sports collectives alongside commercial establishments Chinese and Indian, among others.

Stretching out at the foot of the iconic São Jorge Castle, Mouraria has a rich history of community and solidarity, now evident in the form of statistics (cooperatives) and a thriving independent art scene.

Few minutes walking from Avenida da Liberdade, Rossio and Restauradores, with easy access to tourist spots in the city and public transport excellent for those looking for an apartment with great location.

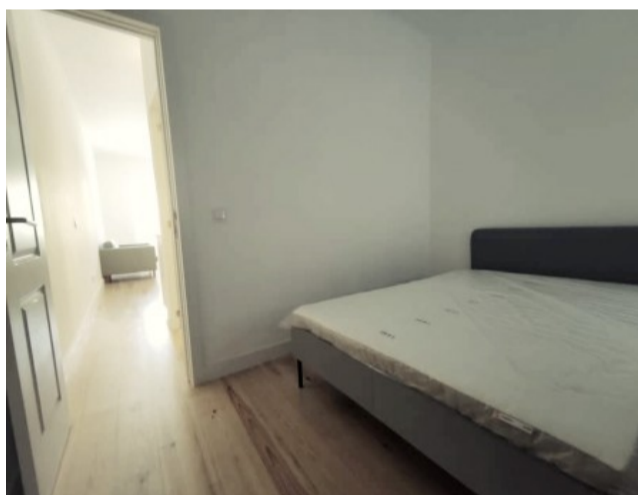
This one bedroom apartment with 30.4 m<sup>2</sup>, is located in the heart of Mouraria next to Martim Moniz.

Come visit us!

You can find here our other [properties for sale in Mouraria area](#).

Read more information about the city in [our Lisbon guide](#).

## Gallery



Telephone: +351 213 471 603  
Email: [info@portugalhomes.com](mailto:info@portugalhomes.com)

Praça da Alegria 1, 3rd Floor, 1250-004 Lisboa, Portugal Licence AMI - 14414 | APEMIP 5940



## Additional Details

**Telephone:** +351 213 471 603  
**Email:** [info@portugalhomes.com](mailto:info@portugalhomes.com)

Praça da Alegria 1, 3rd Floor, 1250-004 Lisboa, Portugal Licence AMI - 14414 | APEMIP 5940



## Site Floorplan

**Telephone:** +351 213 471 603  
**Email:** [info@portugalhomes.com](mailto:info@portugalhomes.com)

Praça da Alegria 1, 3rd Floor, 1250-004 Lisboa, Portugal Licence AMI - 14414 | APEMIP 5940

