

€355,000

Ref: PW1348

44 sqm

44.79 sqm Shop in the heart of Bairro Alto.

- Heating
- Central heating
- Closed Condominium

Telephone: +351 213 471 603  
Email: [info@portugalhomes.com](mailto:info@portugalhomes.com)

Praça da Alegria 1, 3rd Floor, 1250-004 Lisboa, Portugal Licence AMI - 14414 | APEMIP 5940



## Property Description

44.79 sqm Shop in the heart of Bairro Alto.

The Bairro Alto district is known for its bohemian ambiance, restaurants, bars and its traditional commerce.

Full of character, only two steps away from the elegant Chiado, this neighbourhood keeps most of its original traits, being one of the oldest and typical areas in Lisbon.

Also near to Principe Real and a few metres from one of the best-known sights, Miradouro de São Pedro de Alcântara, a new venture will be born in the Bairro Alto, with an architecture of excellence coupled with the charm and diversity of a single district.

Rua da Rosa begins at the Calçada do Combro in Chiado, and steeply to the Rua Dom Pedro V in the mellow Principe Real. A lively cobblestoned street populated with small traditional and inventive restaurants, fado houses and trendy entrepreneur pop-up studios.

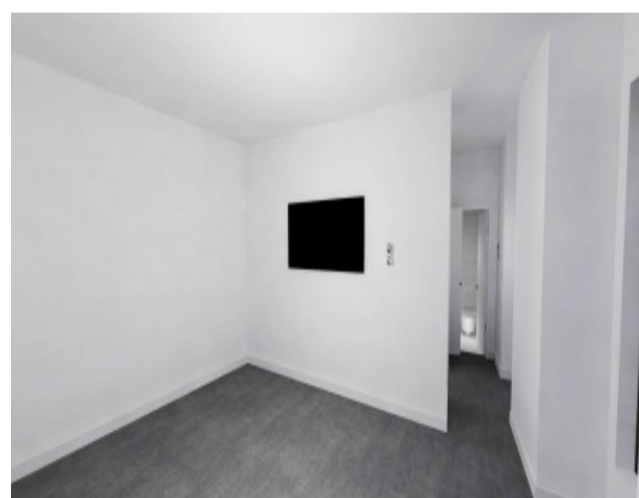
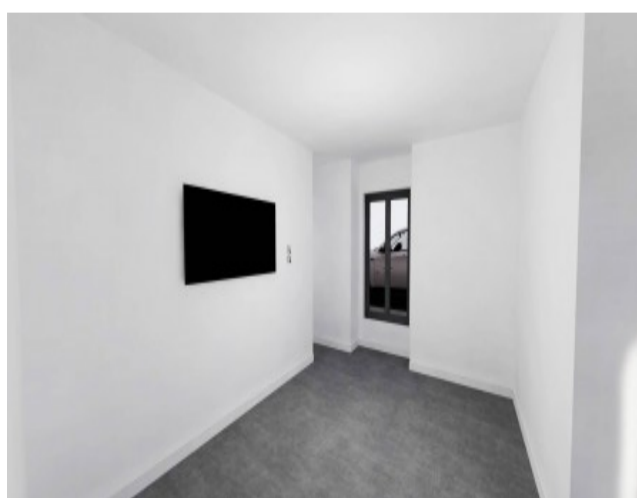
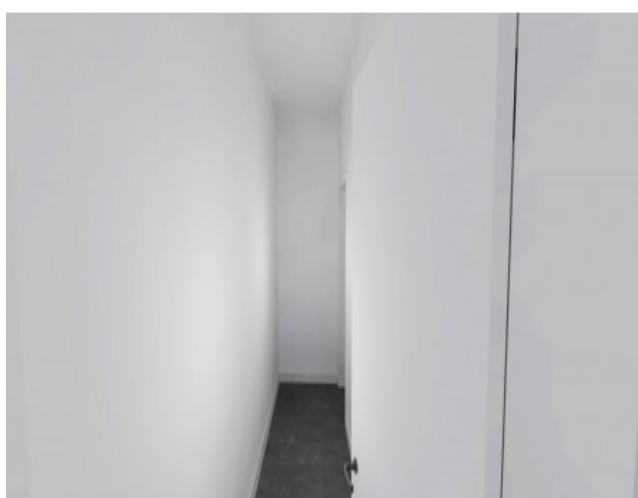
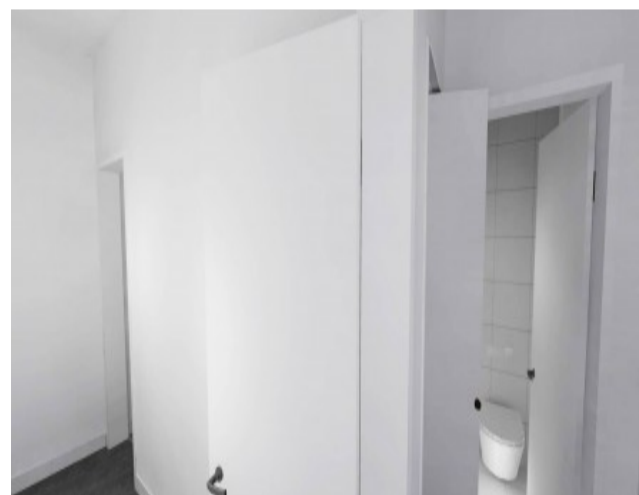
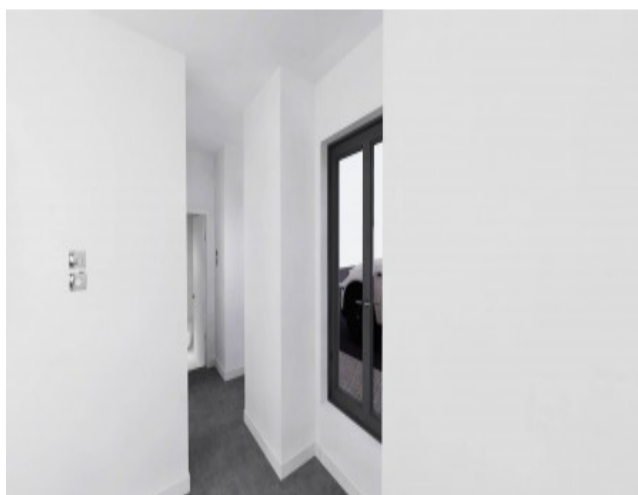
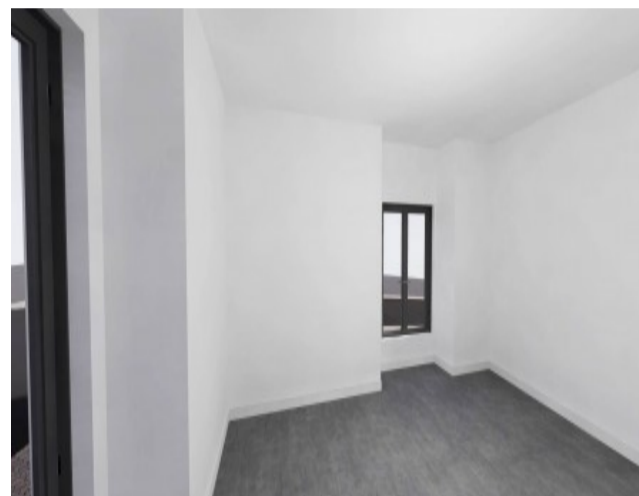
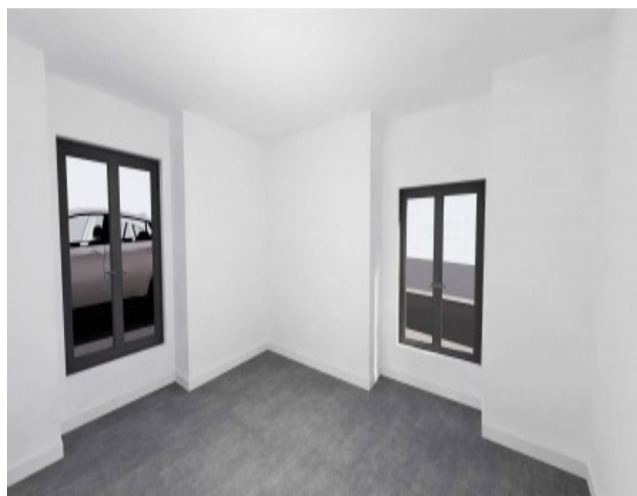
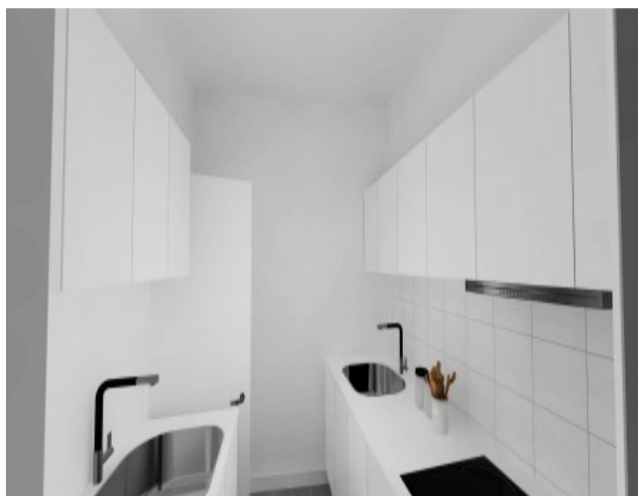
- **350k GV eligible**
- **Guaranteed yield of 6% for the first two years**
- **Completion October 2021**

Enquire for more information.

You can have a look at our other [properties for sale in Bairro Alto](#) and [houses around Chiado](#).

Also, read the [guide to Lisbon](#) by Portugal Homes.

## Gallery



Telephone: +351 213 471 603  
Email: [info@portugalhomes.com](mailto:info@portugalhomes.com)

Praça da Alegria 1, 3rd Floor, 1250-004 Lisboa, Portugal Licence AMI - 14414 | APEMIP 5940



## Additional Details

### Attributes

<b>Status</b> Sold	<b>Net Area</b> 44sq m	<b>Gross Area</b> 44sq m
<b>Condition</b> Refurbished		

### Property Features

Heating	Central heating	Closed Condominium
---------	-----------------	--------------------

## Site Floorplan

