



€385,000

Ref: PW1223

199 sqm

Charming T3 Villa in Sintra, located in the center of Colares with stunning mountain views.

- Heating

Telephone: +351 213 471 603
Email: info@portugalhomes.com

Praça da Alegria 1, 3rd Floor, 1250-004 Lisboa, Portugal Licence AMI - 14414 | APEMIP 5940



Property Description

Charming Villa in Sintra, featured in the **ground floor** with a fully equipped kitchenette; direct access to the yard; 1 bedroom and 1 bathroom. It also has an independent entrance.

Featured in the **1st floor** with a fully equipped kitchen; a living room and 1 fully equipped bathroom.

Closing with a **2nd floor**, featuring a living room; 1 bedroom with full bathroom; and 1 office room (with the possibility to become a bedroom)

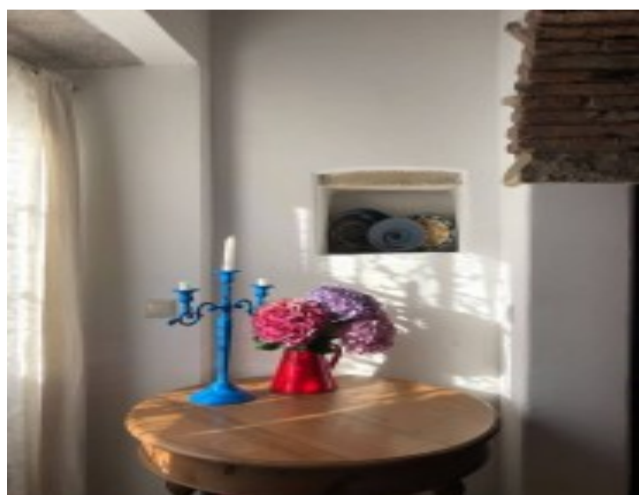
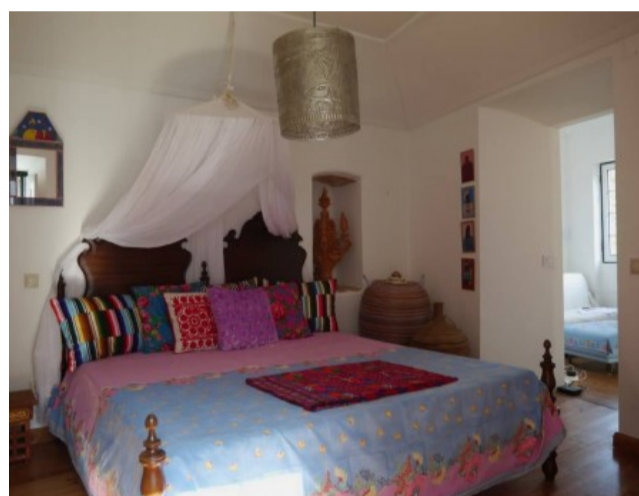
This outstanding villa is surrounded by a large list of resources; a **playground, bank, fire department, a football field, school, a large green space, a pharmacy, supermarkets, nearby swimming pools and beaches, police and fuel stations, and public transportation.**

Been located in the town hall of Sintra enables you to appreciate amazing places, as it is **Cabo da Roca**, a walk along of the most famous coastal trails in Europe? Situated on the western side of Portugal is The Cabo da Roca, a wild and rugged headland that is part of the Sintra Cascais Natural Park. Known for its spectacular scenery, you're able to stroll along a path next to the Atlantic Coast. You'll pass a mix of beaches and cliffs and have the chance to flora and fauna along the way. There's no entrance fee or parking charges here, so you're able to spend as long as you want here. The wind can become a little blustery and when the sun sets here you'll be amazed by what you see.

Sintra is closely linked to its magical gardens. Developed around the castles and mansions, these gardens have their own unique atmosphere and you can also take advantage of a tour if you wish. Monserrate Park, Regaleira Park and Pena Park are well worth taking a look at for its variety of native and exotic flora, royal walking paths, and even extra unique touches, like small towers. These gardens are definitely the best places to visit when in Sintra.

Feel free to find more information about this unique property and location through our team of experts, and Find your Next Portugal Homes now!

Gallery



Telephone: +351 213 471 603
Email: info@portugalhomes.com

Praça da Alegria 1, 3rd Floor, 1250-004 Lisboa, Portugal Licence AMI - 14414 | APEMIP 5940



Additional Details

Attributes

Status Sold	Net Area 199sq m	Gross Area 199sq m
Floors 2	Condition Refurbished	

Property Features

Heating

Site Floorplan

Telephone: +351 213 471 603
Email: info@portugalhomes.com

Praça da Alegria 1, 3rd Floor, 1250-004 Lisboa, Portugal Licence AMI - 14414 | APEMIP 5940

